



United States Department of Agriculture

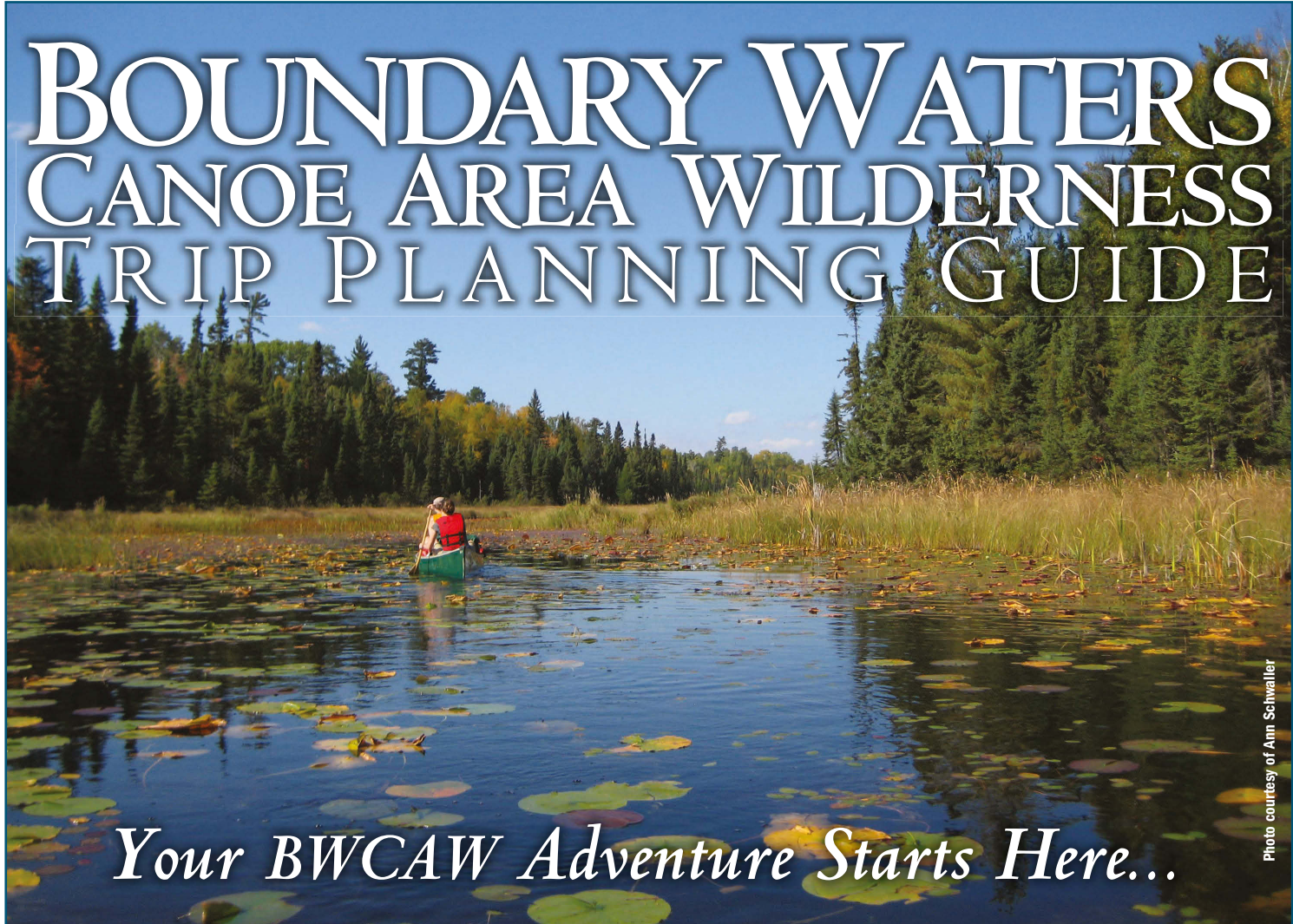


Photo courtesy of Ann Schwallier

# BOUNDARY WATERS CANOE AREA WILDERNESS TRIP PLANNING GUIDE

*Your BWCAW Adventure Starts Here...*

Great glaciers carved the physical features of what is today known as the Boundary Waters Canoe Area Wilderness (BWCAW) by scraping and gouging rock. The glaciers left behind rugged cliffs and crags, rocky shores, sandy beaches and thousands of lakes and streams, interspersed with islands and surrounded by forest.

The BWCAW is a unique area located in the northern third

of the Superior National Forest in northeastern Minnesota. Over 1,098,000 acres in size, it extends nearly 150 miles along the International Boundary adjacent to Voyageurs National Park and Canada's Quetico and La Verendrye Provincial Parks. The BWCAW contains over 1,200 miles of canoe routes, 12 hiking trails and over 2,000 designated campsites. This area was set aside in 1926 to

preserve its primitive character and made a part of the National Wilderness Preservation System in 1964 with subsequent legislation in 1978.

Designated wilderness offers solitude, freedom, primitive recreation, challenge, risk, and personal connection with nature. The BWCAW allows visitors to canoe, portage and camp in the spirit of those travelers that came before them centuries ago.



## What's Inside

Plan your bwcaw Trip . . . . .	2
Wilderness Permits: the Basics . . . . .	3
Leave No Trace Principles . . . . .	5
bwca Wilderness Regulations & Rules	6

Smart and Safe Wilderness Travel . . . . .	8
Camping and Fire . . . . .	10
Winter Wilderness Travel . . . . .	11
bwcaw Entry Point Map . . . . .	12
bwcaw Entry Points . . . . .	14
bwcaw Past, Present and Future . . . . .	16

Protecting Your Natural Resources . . . . .	18
Special Uses . . . . .	21
Volunteering . . . . .	22
Your User Fees at Work . . . . .	22
Sample Trip Itinerary . . . . .	23
Permit Issuing Stations . . . . .	24

# Plan Your BWCAW Trip

Successful wilderness trips don't just happen. They are the result of careful planning. Please use this trip planning guide to get started. However, we suggest that you also use guidebooks and maps found in bookstores, local libraries, online and at outdoor equipment stores. The expertise of outfitters and guides can also be used when planning a BWCAW trip (see page 24).

As you begin to plan your trip, ask yourself about the type of experience you seek. Would your needs for solitude or your quest for the elusive lake trout best be met inside the BWCAW, or would camping in areas of the Forest adjacent to the BWCAW better suit the needs of your group? The BWCAW is only one of many recreation alternatives on the Superior National Forest.

## Recreation Alternatives in the Superior National Forest

### Backcountry Campsites

There are 254 backcountry campsites outside the wilderness that offer remote paddling, camping and fishing. Here you can experience solitude without reservations, fees or permits and still have a fire grate and latrine. Visitors must follow the same Leave No Trace principles listed on page 5. For a list of canoe routes with backcountry campsites go to:

[www.fs.usda.gov/Internet/FSE\\_DOCUMENTS/stelprdb5302434.pdf](http://www.fs.usda.gov/Internet/FSE_DOCUMENTS/stelprdb5302434.pdf)

### Forest Campgrounds

The Forest has 23 developed campgrounds open from mid-May to mid-September. Campground facilities vary from flush toilets and showers at fee campgrounds, to "rustic" campgrounds with vault toilets

and water pumps with no fees. Rustic campgrounds are available first come, first served year-round. Each campsite has a picnic table, fireplace, tent pad and parking. Reservations may be made for some fee campgrounds by calling (877) 444-6777 or at: [www.recreation.gov](http://www.recreation.gov)

### Resorts & Private Campgrounds

Near the Forest are a variety of private resorts and campgrounds that suit the needs of visitors looking for a trip near the wilderness rather than in it. See tourism information on page 24.

### Day Trips into the BWCAW

Non-motorized day trips by canoe, kayak, standup paddleboard or hiking require a Self Issued permit available at entry point kiosks. No reservations or fees are required for non-motorized day trips. See page 3 for details.

## Accept the Wilderness Stewardship Challenge

Accepting the wilderness challenge comes with great responsibility. Wilderness recreation inside the BWCAW requires careful planning, preparation and involves some risk. Wilderness travel offers great personal freedom, but also requires self-reliance and good judgement. The visitor must have knowledge of the entry points and routes; and some research may be needed to gather this information. Each step in the planning

process is necessary in order to protect the BWCAW and to provide a quality wilderness experience. Permits are always required to enter the BWCAW (see page 3).

Wilderness visitors face inherent risk of adverse weather conditions, isolation, physical hazards and lack of rapid communications. Do not rely on a search and rescue, it may not be possible. Be prepared! Prevent the need for a search and rescue operation that may

impact the integrity of the wilderness area or put lives in danger. It is your responsibility to acquire and maintain necessary skills for primitive travel by foot, canoe or other non-mechanical means.

If you lack the appropriate skills for remote backcountry travel, consider using a professional guide (see page 24).

**You are responsible for your own safety and that of your group.**

## Before You Leave Home

Check current Minnesota Department of Natural Resources (MN DNR) fishing, hunting and watercraft regulations before your trip including:

- Canoe, kayak, standup paddleboard and watercraft registrations
- Fishing licenses and trout stamps
- Fishing limits and possession of fish
- Hunting seasons
- Watercraft lights

For more information, contact the MN DNR: 888-646-6367

[www.dnr.state.mn.us/regulations](http://www.dnr.state.mn.us/regulations)

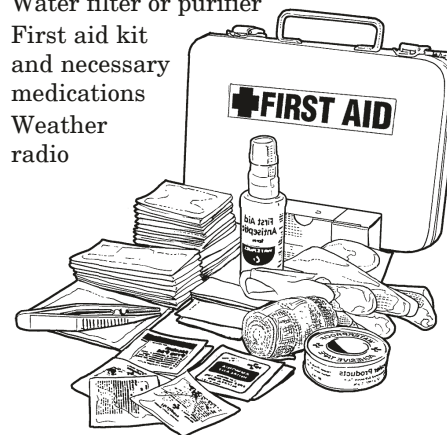
## Trip Itinerary

Always leave a trip itinerary with someone before leaving home! See sample trip itinerary on page 23.

### Bring survival gear to prevent becoming injured or lost:

- Map
- Compass
- Rain gear
- Signaling mirror
- Fire starter
- Extra food
- Warm clothing
- Whistle
- Nylon cord
- Folding knife

- Water proof pouch
- Emergency blanket
- Sleeping bag and tent
- Water filter or purifier
- First aid kit and necessary medications
- Weather radio





# Wilderness Permits: the Basics

Permits are required year-round for all visitors to the Boundary Waters Canoe Area Wilderness (BWCAW). Please use the following information to help you determine which type of permit is appropriate for your group.

## Quota Permits

Quota permits are required for any group entering the BWCAW between May 1 and September 30 if they are camping overnight (whether the group is paddling, motoring or hiking) or if they are visiting during the day using a motorized boat. The quota system regulates how many groups may enter an entry point each day.\*

In addition to daily quotas, motorized use is limited by a weekly motor quota. Groups may only enter the BWCAW on the entry date and through the entry point specified on the permit. Permits may only be picked up the day before or on the date specified on the permit. Permits may not be transferred to someone not listed on the permit. Reservations are recommended since there is a limited number of quota permits available for each entry point.

Quota permits are issued only at Forest Service permit issuing stations and cooperating businesses under a Cooperator Agreement.

## First Come, First Served

All permits for all entry points will be released on a first come, first served basis beginning at 9:00 a.m. Central Time on the last Wednesday in January through [www.recreation.gov](http://www.recreation.gov) or through the reservation center at: 877-444-6777.

Visitors will see available entry points and dates, and make a reservation instantly for the permit that best meets their needs. A \$6.00 non-refundable reservation fee is charged for each permit reserved. The entry point, entry date, group leader and alternates cannot be changed after the reservation is complete. The exit date, issuing station and group size may be changed.

\*Some exclusions apply



Photo courtesy of Robert McAdams

## One Permit Per Day

One permit per day, per permit holder: To ensure everyone has the opportunity to make a reservation, be aware that when a visitor makes multiple reservations on the same entry date or has overlapping reservations, all but one permit will automatically be cancelled by the Forest Service. Cancelled permits will be returned to the inventory.

## Non-Quota Self Issued Permits

Self Issued permits are required year-round for all non-motorized day use visitors, for any motorized day use into Little Vermilion Lake, and for all overnight visitors entering the BWCAW between October 1 and April 30. The Self Issued

forms are available at any Superior National Forest Office and at entry point kiosks. No quota is applied to this use, so no reservations are needed.

*“In the wild world, relationship is evolutionary, time is geologic, beauty is intelligent. There we find ourselves under a powerful spell.”*

— Janisse Ray

Please fill out the form carefully and review the rules on the back of the permit with your entire group. Carry the top copy of the permit with you at all times and place the duplicate copy in the box at the entry point or drop it off at the nearest Forest Service office when you return.

## Special Use Permits

Outfitters and guides leading groups into the BWCAW must obtain a special use permit and must follow all the same Regulations and Rules (see page 21).

## User Fees

User fees are charged for all overnight visitors to the BWCAW between May 1 and September 30. There are no user fees for day use visitors. Fees are as follows:

## User Fees Per Person Per Trip

Adult	\$16.00
Youth (0-17)	\$8.00
Interagency Senior/ Access Card Holders	\$8.00
Youth Access Card Holders	\$4.00

*“Wilderness itself is the basis of all our civilization. I wonder if we have enough reverence for life to concede to wilderness the right to live on?”*

— Margaret (Mardy) Murie

## Overnight User Fee Deposit

When making advanced reservations, you will be charged a minimum of 2 adult overnight user fees. You will also have the option to pay for the entire group as well as changing the group size within a one day window prior to your entry date. If cancelled outside the 2-day window, the card holder will be fully refunded. If cancelled within the 2-day window, \$32.00 for 2 adults is retained and additional payments will be refunded. The Forest Service will retain the entire payment if the group is a no show. A new confirmation will be emailed each time a change is made. Adjustments to group sizes will be made at the permit issuing station as needed.

## Permit Issuing Station

When reserving a permit, the default issuing station will be the Forest Service (FS) Office responsible for that entry point. You may choose a cooperating business as a permit issuing station. Businesses are often open earlier and later than FS stations. See the list of permit issuing stations on page 24 of this brochure. Hours and contact information of the issuing station will be listed on your confirmation email. You may want to confirm dates, hours and location ahead of time. You may change your issuing station through your [recreation.gov](http://recreation.gov) account.

## Picking Up A Permit

Permits can only be picked up the day before or the day of entry. Please check with your desired permit pick-up location to confirm their office hours. Remember to bring a photo ID when you pick up your permit.

## Reserved Permits

Permits may only be picked up the day before or on the date of entry from a permit issuing station by a group leader or alternate listed on the permit. Alternates cannot be added after a permit is reserved. Listing alternates gives your group options if the group leader must miss the trip. Remember to bring a photo ID with you. The person signing the permit must be with the group the entire trip. If your group size changes, additional user fees will be collected or a refund will be credited to the credit card used to pay for the reservation.

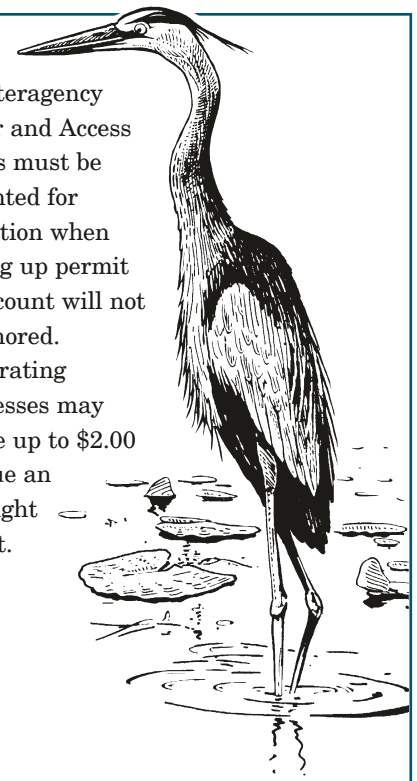
## Non-Reserved Permits

Walk-up permits for any entry point with available quota may be obtained the day before or on the date of entry. User fees apply, and the \$6 reservation fee will be charged.

## Payment

Credit cards are the preferred method of payment at all permit stations. Cooperating businesses cannot accept cash or checks for user fees.

All Interagency Senior and Access Passes must be presented for validation when picking up permit or discount will not be honored. Cooperating businesses may charge up to \$2.00 to issue an overnight permit.



## Permit Reservations

Contact [Recreation.gov](http://Recreation.gov) to make your BWCAW permit reservation. Permits may be reserved online or by phone.

### RESERVATION LINE

877-444-6777 Toll-Free

877-833-6777 TTY Relay Service

606-515-6777 International

### WEBSITE RESERVATIONS

[www.recreation.gov](http://www.recreation.gov)

## Boundary Waters Canoe Area Wilderness Dark Sky Sanctuary

The BWCAW is the first and largest federally designated wilderness to be so named, a certification granted by the International Dark Sky Association, a non-profit founded to reduce light pollution and protect the night skies.

### Protect the Dark Sky Sanctuary!

- The BWCAW has an exceptional quality of starry nights and a nocturnal environment worth protecting for visitors and wildlife.
- Use minimal lighting while camping. Refrain from using perimeter or flood lights.
- Learn more about the International Dark Sky Association: [www.darksky.org](http://www.darksky.org)



### Preserve the night sky where you live:

- Use outdoor lighting only when and where needed.
- Utilize fully shielded light fixtures outdoors.
- Minimize blue light emissions by using amber.
- Close blinds at night to keep indoor light inside.
- Look for the IDA fixture seal of approval when buying lights: [www.darksky.org/our-work/lighting/lighting-for-industry/fsa/](http://www.darksky.org/our-work/lighting/lighting-for-industry/fsa/)





# Leave No Trace Principles



*The Leave No Trace Principles of outdoor ethics form the framework of the BWCAW Regulations and Rules:*

The BWCAW is legendary in its richness and complexity. It exerts an ageless draw upon people who seek adventure, refreshment and the exhilaration of outdoor recreation. But, as these wildlands host more and more visitors, our collective mark on the environment has become apparent — and more damaging. Water pollution,

litter and disturbance to vegetation and soil, wildlife and other recreating visitors are indicators of the need to protect these wild and serene waters and forests, and their inhabitants.

There are far more of us pushing our outdoor activities to greater extremes and into the remotest parts of the natural world everyday. Our mere presence in

wildlands has an influence. Destruction can be prevented if visitors are better informed about low impact techniques. To insure the continued existence of the places and wildlife that inspire us, we must educate ourselves and adopt the skills and ethics that enable us to Leave No Trace. For more information on becoming LNT savvy, visit: [www.lnt.org](http://www.lnt.org)

## Plan Ahead & Prepare

- Know area Regulations and Rules.
- Prepare for extreme weather.
- Use a map and compass.
- Reduce litter from the source — repackage food into reusable plastic bags or containers and remove excess packaging. Unwrap snack foods at home and bag them in bulk.



## Minimize Campfire Impacts

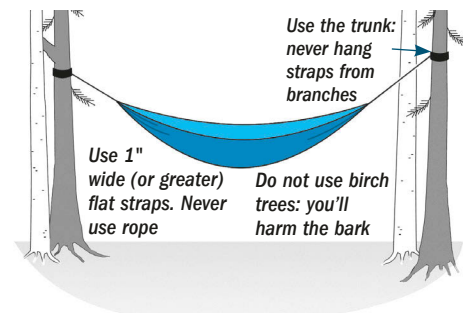
- Use a lightweight stove for cooking.
- When fires are permitted, use an established fire grate and keep fires small.
- Burn all wood and coals to ash, and make sure the fire is completely out.
- Even after forest fires, you may see an ample supply of burned wood near your site. Collect firewood well away from campsites to prevent enlarging and defacing the area and depriving the soil of nutrients.
- Use only dead and downed wood easily broken by hand and smaller than your wrist.
- Damaging any living plant is illegal. Peeling birch bark, carving, nailing or chopping roots kills the trees. Never cut live vegetation!



## Travel & Camp on Durable Surfaces

- Durable surfaces include established trails and campsites, rock, gravel, dry grasses or snow.
- Keep campsites small — stay in area where vegetation is absent and don't enlarge the campsites.
- Walk in single file in the middle of the trail even when the trail is muddy.

## Using a Hammock?



- Select thick-barked trees that have a trunk diameter of at least 8 inches.
- Do not use birch trees for hammocks. It harms the bark.
- Hang from flat straps which are 1" or greater in width or manufactured for hammock use. Never use rope even if it came with the hammock.
- Only use the trunk of the tree, do not hang straps from branches. Never remove branches from a live or dead standing tree!
- Protect vegetation by hanging your hammock in a place that has already been impacted or has a durable surface such as bedrock below.

## Dispose of Waste Properly

- Pack out all trash, leftover food & litter.
- Latrines are not garbage cans! Trash in the latrine harms wildlife. Deposit only human or dog waste in the latrine.
- Preserve water quality, wash at least 200 feet from shore — soil filters dirty water and breaks down bacteria. Use soap and other products sparingly, they are not biodegradable.
- Burning trash in firegrates is illegal and it pollutes the air and soil.
- Personal waste items such as cigarettes, cotton swabs, grease, wipes, paper towels, bandages, diapers, condoms, plastic baggies and female

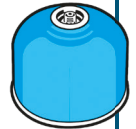
products (tampons and pads), should always be packed out.

## Leave What You Find

- Do not take cultural or historical artifacts or structures.
- Do not introduce or transport non-native plants, live bait or animals.
- Do not take rocks, plants and other natural objects such as antlers.

## Disposing of Propane Cylinders

- Contact your local liquid propane (LP) supplier about refilling and recycling empty LP cylinders.
- To prevent waste, consider a stove that uses refillable liquid fuel canisters.



## Be Considerate of Others

- Let nature's sounds prevail. Human noise has a significant effect on solitude, especially in water-based wilderness areas where sound carries long distances over water. When noise squelches natural sounds, animals and humans suffer.
- Avoid playing music, yelling, banging pots, dragging canoes over rocks, and singing loudly especially in the morning and evening.
- Take breaks away from trails, portages and other visitors.
- Do not take campsites for day use.

## Respect Wildlife

- Do not follow or approach wildlife.
- Never feed animals. It can damage their health and alters wild behaviors.
- Protect wildlife. Store rations properly.
- Use lead-free tackle.

## Preserve the Night Sky

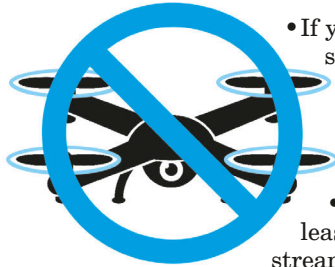
- Use minimal lighting while camping.
- Refrain from using perimeter, flood lights or hanging string lights.

# BWCA Wilderness Regulations & Rules

The following are enforceable Forest Service regulations  
(maximum penalty of \$5,000 and/or 6 months in jail).

## Drone Free Zone

- Drone operation is prohibited in the BWCA Wilderness.
- Violations punishable under federal law Executive Order 10092 and 36 CFR 261.18(a).



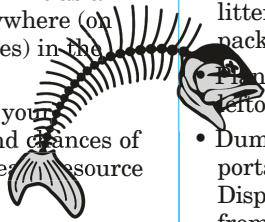
- If you're not near a latrine, dig a small hole 6–8 inches deep at least 200 feet\* or more back from the water's edge. When finished, fill hole and cover with needles and leaves.
- Bathe and wash dishes at least 200 feet from lakes and streams.

## Travel Permits

- You must enter the BWCAW at the entry point and on the entry date shown on your permit.
- You may not re-enter on a different date using the same permit.
- Permit stubs become invalid when the group leader exits the wilderness.
- The person signing for and picking up the permit can only be responsible for one group during the specified time on the permit.

## Group Size

- Nine (9) people and four (4) watercraft are the maximum allowed together in the wilderness.
- You may not exceed the limit as a group at any time or anywhere (on water, portages, campsites) in the BWCAW.
- Smaller groups enhance your wilderness experience and chances of seeing wildlife, and decrease resource impacts.



## Containers

- Possessing any cans or glass bottles is illegal, except containers of fuel, insect repellent, or medicines.
- Carry food and drinks only in containers designed and intended for repeat use to prevent more trash.



## Food, Fish Remains & Live Bait

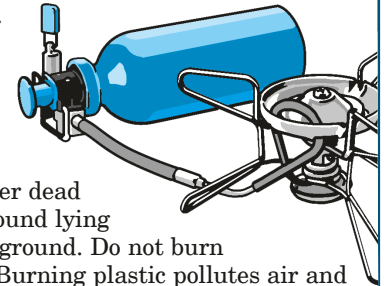
- When preparing for your trip, reduce litter at the source by minimizing packaging.
- Plan your meals so you don't have leftovers. If you do, pack them out.
- Dump bait bucket water before every portage and refill on the other side. Dispose of fish remains at least 200 feet\* from shorelines, campsites, trails, and portages. MN state law prohibits dumping unused bait into water, pack it out.
- Dumping bait on the ground is considered littering. Therefore, unwanted live bait should be packed out with you and placed in the trash, disposal bins or compost bins.

## Campfires

- Due to potential fire danger, fire restrictions may be put into effect. Check on current conditions just prior to your trip. You may be required to use a camp stove if there is a campfire restriction.
- Bringing a small camp stove is a good idea because it heats food more quickly, has less impact than a fire, and comes in handy during rainy weather.
- Fires are allowed within the steel fire

grates at designated campsites or as specifically approved on your visitor's permit.

- If you build a fire, burn small diameter dead wood found lying on the ground. Do not burn trash. Burning plastic pollutes air and water.
- Collect firewood well away from campsites by paddling down the shore and walking into the woods where it is more abundant.
- Dead and downed wood easily broken by hand or cut with a small folding saw eliminates the need for an axe. Never cut a live tree!
- Transporting wood from out of state is prohibited due to the spread of tree diseases and pests.
- Drown your fire with water any time you are going to be away from your camp or at bedtime. Stir the ashes until they are cold to the touch.



**Drown!**  
**Campsites**

**Stir!**

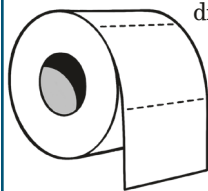
**Cold to the touch!**

- All members of a permit group must camp together. Only one campsite per group.
- During ice free season, camp only at Forest Service designated campsites that have steel fire grates and wilderness latrines. For winter camping, see page 11.
- When in a busy area, travel further in and away from the periphery if capable.
- It is illegal to cut, hack or deface live vegetation for any reason.
- You may camp up to fourteen (14) consecutive days on a specific site.

**\*200 feet is approximately 70 big steps for adults and 120 for kids!**

## Toilet Facilities & Water Quality

- Use wilderness latrines at designated campsites.
- Wilderness latrines are not garbage cans and should be used for the intended purpose only. Personal waste items such as cigarettes, cotton swabs, grease, wipes, paper towels, bandages, diapers, condoms, plastic baggies and female products (tampons, pads and applicators), should always be packed out and never go into the latrines.



Personal waste in latrines prevents decomposition of bodily waste making latrines ineffective and can contaminate surrounding water. Remember all trash must be packed out.

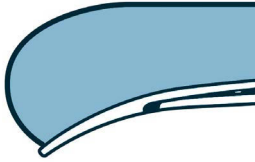


*“In my opinion, camping can be the greatest expression of free will, personal independence, innate ability, and resourcefulness possible today in our industrialized, urbanized existence.”*

— Anne LaBastille

### Storing Watercraft

- Only watercraft and equipment used in connection with your current visit may be stored and left unattended.
- All equipment and personal property must be carried out with you at the end of each trip.



### Cultural Heritage

- Leave archaeological, historical and rock painting sites undisturbed.
- The use of metal detectors is prohibited.

### Firearms & Fireworks

- Discharging a firearm is prohibited within 150-yards of a campsite or occupied area, or in any manner or location that places people or property at risk of injury.
- Firearm and game laws apply in the BWCAW.
- Fireworks of any kind are illegal.



### Pets

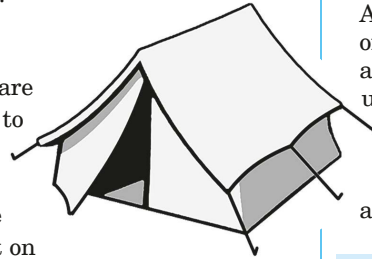
- Dogs endanger wildlife and barking intrudes on the experience of others.
- Dogs must be under human control at all times on a 6-foot or shorter leash.
- Dispose of dog waste 200 feet\* from water sources, campsites and portages, or deposit it in a latrine.

### Leave No Trace of your Visit

- After you break camp and load your watercraft, do a final inspection of your camp. Pick up any remaining litter.
- Your fire must be cold to the touch.
- Please treat the BWCAW with care. Leave no trace of your visit to protect this special place for future generations.

### Hiking

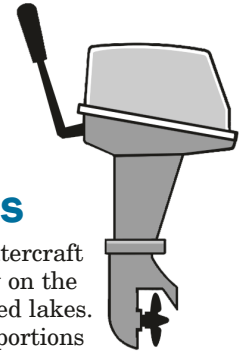
- Trail users are encouraged to minimize impact by limiting use to one night on non-developed sites.
- You must camp more than 200 feet from a developed site or another group.
- You must camp at least 200 feet from any trail, portage, lake or other water source.
- Most importantly, be sure to use common sense and follow the safety guidelines recommended on page 8. Wilderness permits are required year round for hiking in the BWCAW.



**\*200 feet is approximately 70 big steps for adults and 120 for kids!**

### Motor-powered Watercraft Regulations

- Motor-powered watercraft are permitted only on the following designated lakes. All other lakes or portions of lakes within the BWCAW are paddle-only. Motors may not be used or be in possession on any paddle-only lake. No other motorized or mechanized equipment (including pontoon boats, paddle boats, sailboats and sailboards) is allowed.



### Portage Wheels

Mechanical assistance is only permitted over the Four-Mile Portage, Fall-Newton-Pipestone and Back Bay Portages into Basswood Lake, Prairie Portage and Vermilion-Trout Lake Portage.

#### Lakes with 10 Horsepower (HP) Limit

On these lakes, the possession of one additional motor no greater than 6 HP is permitted, as long as motors in use do not exceed 10 HP:

- Clearwater, North Fowl, South Fowl, Seagull (no motors west of Three Mile Island), sections of Island River within the BWCAW.

#### Lakes with 25 HP Limit

On these lakes or portions of these lakes, the possession of one additional motor no greater than 10 HP is permitted, as long as motors in use do not exceed 25 HP:

- Basswood (except that portion north of Jackfish Bay and Washington Island), Saganaga (except that portion west of American Point), Fall, Newton, Moose, Newfound, Sucker, Snowbank, East Bearskin, South Farm, Trout.

#### Lakes with no HP Limits

- Little Vermilion, Loon, Lac La Croix (not beyond the south end of Snow Bay in the USA), Loon River.

## Leave No Trace Video

Watch and share the BWCAW Leave No Trace User Education Video series with your group before you depart! Parts 1 & 2 include important trip planning information and should be viewed ahead of time. Part 3 will be shown when you pick up your permit. After viewing the videos, you will understand how to make a difference in the long-term health of the BWCAW by engaging in responsible recreation practices. This is an essential education tool in protecting the fragile wilderness ecosystem and providing a quality recreation experience for current and future generations. The BWCAW Leave No Trace User Education Video series may be accessed online at:

[youtube.com/watch?v=nen7IRqEjm8](https://www.youtube.com/watch?v=nen7IRqEjm8)

For information about reserving The BWCA Wilderness Education Kit, contact any Forest Service Office found on page 24 of this publication.

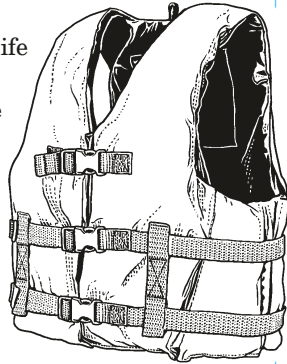


# Smart & Safe Wilderness Travel

*Wilderness travel offers great personal freedom, but requires self-reliance and good judgment. Use common sense and follow these safety tips for a safe BWCAW experience.*

## Life Jackets

- Always wear a life jacket.
- Minnesota state law requires all watercraft, including canoes, to have one wearable U.S. Coast Guard-approved personal flotation device (PFD) on board and readily accessible for each person in the watercraft.



## Mandatory Child Life Jacket Law

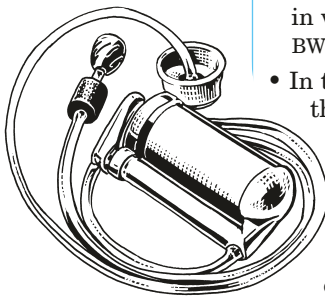
- Minnesota law requires a life jacket to be worn by children less than 10 years old when aboard any watercraft while underway. For more on Minnesota state law, see: [www.dnr.state.mn.us/safety/boatwater/index.html](http://www.dnr.state.mn.us/safety/boatwater/index.html)

## Rapids

- Running rapids in the BWCAW is not safe! **Always** use provided portages.
- Powerful currents can trap swimmers under water or sweep them towards dangerous waterfalls.
- Fast moving water can push swimmers and boats into rocks and logs.
- Even with life jackets on, rapids are dangerous.

## Water Quality

- *Giardia lamblia* is a parasite that can cause an internal illness that will need medical attention.
- All drinking water should be treated by one of the following methods:
  1. Bring water to a full boil for 1 minute — then let stand until cool enough to drink.
  2. Purify with a filter specifically designed to remove *Giardia lamblia*.
  3. Treat water with a chemical specifically designed to kill *Giardia lamblia*.



## Fish

- Chemicals such as mercury, PCBs and dioxin have been found in some fish from certain waters.
- Eat more pan fish and fewer predator fish, and trim the skin and fat to reduce your risk.
- Check with the Minnesota Department of Public Health for current information on limits of fish consumption at 651-201-4911.

## Hypothermia

- A low body temperature can be serious, even fatal.
- Early warning signs are uncontrolled shivering, slurred speech, bluish tinge to lips, lack of coordination and poor concentration.
- To prevent hypothermia, layer clothing and get adequate food and water.
- To treat hypothermia, seek shelter from the wind, replace any wet clothing & share body heat if necessary.
- Give warm fluids if the person is conscious and have them rest until thoroughly warmed.

## First Aid & Emergencies

- Each permitted group should carry a well stocked first aid kit and have group members that know how to provide first aid.
- Note the location of the lake, campsite, trail or portage on a map to help emergency people locate any seriously injured group members.
- Document the extent of the injury and a basic physical description of the injured person.
- Send all of this information with visitors able to exit the BWCAW for help.
- Do not rely on a cell phone. Having a cell phone cannot substitute for knowing how to handle an emergency in wilderness. Many areas of the BWCAW lack cell phone coverage.
- In the event of serious injury or illness, the standard SOS call is a series of three signals of any kind, either audible or visible.
  - For summoning help from an aircraft in an emergency, signal them by paddling in small circles or waving a brightly colored cloth tied to the canoe paddle.

## Travel

- There are no directional signs in wilderness.
- A compass and accurate map are essential.
- Bring reliable maps. Maps can be purchased at some Forest Service offices, area businesses and outfitters, or directly from the map companies — see page 13 for details.
- If you get lost, don't panic. Sit down, relax and think. Chances are that you will figure out your location in a few minutes.
- If you plan to use a Global Positioning System (GPS) for navigating, be sure you also bring a map and compass as a back up in case your GPS unit fails.



## Weather

- Canoe close to shore. It lessens the chance of being endangered by sudden changes of weather. If a storm threatens, get off the water.
- Dress in layers and be prepared for every kind of weather situation.
- If in a lightning storm on the water, get to shore. If on land among trees of similar height, put yourself an equal distance between two trees. Avoid the tallest trees.
- Avoid being a bridge between an object and the ground. For example, do not lean against tent poles or trees.
- Avoid potential paths of conduction such as wet, lichen-covered rocks, cracks and crevices (wet or dry) and areas subject to the “spark gap” such as overhangs, wet ropes and tree roots.
- If your skin tingles, or your hair stands on end, stand on a life jacket or sleeping bag, squat low to the ground on the balls of your feet.
- Place your hands on your knees with your head between them. Make yourself the smallest target possible, and minimize your contact with the ground.
- When camping, hiking or paddling in high winds, be mindful of safety concerns including worsening weather, high waves, possible blowdown, etc.



## Dehydration

- The body becomes dehydrated when more fluids are lost than replaced.
- Drink plenty of water throughout the day.
- Signs of dehydration include headache, cold and flu symptoms, and infrequent urination.

## Bear Awareness & Food Storage



### Single Tree & Pulley

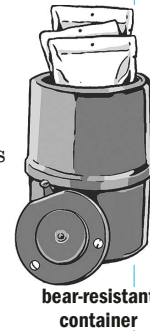
Pulleys make pack hanging easier on trees and campers.

- Never leave food unattended on portage trails or in camp, or other scented items in your tent at any time. Doing so attracts bears and encourages unnatural populations of some species.

- Some bears overcome their fear of humans and approach campsites looking for food. This includes island sites since bears are good swimmers.

- If you do encounter a bear, most will be scared off if you make noise (shout, bang pots or throw fist-sized rocks at the bear, etc.).

- A very persistent bear may be discouraged by spraying pepper spray into its eyes.
- Use a bear-resistant container or ropes to hang food packs. Learn about approved bear-resistant products, visit [igbconline.org](http://igbconline.org).



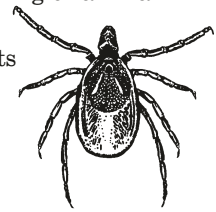
bear-resistant container

## Ticks Can Spread Disease, Including Lyme Disease.

Most tick bites do not result in disease, but it is a good idea to recognize and watch for the early symptoms of some of the more commonly encountered tick-transmitted diseases.

## Where can I be infected?

Ticks are found in wooded or brushy areas, on the edge of hiking or animal trails, or on the edge of a field where it meets a wooded or brushy area. They are in the BWCAW.



## Protect yourself:

- Use insect repellent that contains 20 – 30% DEET. Natural oils such as geranium, lavender, lemongrass, citronella, eucalyptus and cedar wood can repel ticks as well. No campsite insect foggers.
- Wear clothing that has been treated with permethrin.
- Look for ticks on your body. Ticks can hide under the armpits, behind the knees, in the hair and in the groin.
- See a doctor if you develop a fever, rash, severe fatigue, facial paralysis or joint pain. For more information visit: [www.cdc.gov/Lyme](http://www.cdc.gov/Lyme) or: [www.health.state.mn.us/diseases/tickborne/ticks.html](http://www.health.state.mn.us/diseases/tickborne/ticks.html)

# Travel to Quetico Provincial Park

## Entry Into Canada

If your trip to the BWCAW will include entry into Canada, you should contact the Canadian Border Services Agency at least 6-8 weeks in advance of your trip to obtain a *Remote Area Border Crossing (RABC)* permit. To apply for a RABC Program permit, you must be a citizen or permanent resident of Canada or the United States. To learn more about RABC permits including eligibility, documents, fees and applications, visit: [www.cbsa-asfc.gc.ca/prog/canpass/rabc-pfrel/menu-eng.html](http://www.cbsa-asfc.gc.ca/prog/canpass/rabc-pfrel/menu-eng.html)

Permits for Quetico Provincial Park are required for overnight and day use entry. Please visit [www.ontarioparks.com](http://www.ontarioparks.com) for permit information.

## Fishing In Canada

If you plan on fishing in Canada, including the Canadian side of the border lakes, you must have an Outdoors Card and/or Canadian fishing license. Non-resident fishing licenses are available online or by calling the Ontario Ministry of Natural Resources at 1-800-288-1155. For more information visit:

[www.ontario.ca/page/fishing](http://www.ontario.ca/page/fishing)

## Entry Into The U.S. From Canada

U.S. citizens can present a valid U.S. Passport, Passport Card, Enhanced Driver's License, Trusted Traveler Program card (NEXUS, SENTRI or FAST), or Form I-872 American Indian Card or (when available) Enhanced Tribal Card. Canadian citizens can present a valid passport, Enhanced Driver's License or Trusted Traveler Program card (NEXUS, SENTRI or FAST). U.S. and Canadian citizen children under the age of 16 (or under 19, if traveling with a school, religious group, or other youth group) need only present a birth certificate or other proof of citizenship. The birth certificate can be original, photocopy or certified copy. If you enter the United States from Canada on your BWCAW trip, you must report to a Customs Border Protection (CBP) officer for inspection at a port of entry or a designated inspection location every time you enter the U.S. from Canada by boat. Alternatively, the CBP Reporting Offsite Arrival – Mobile (ROAM) application can be used by boaters to check-in remotely. Download

the CBP ROAM™ app prior to departure from the Apple App Store or the Google Play Store and visit the U.S. Customs and Border Protection website for more information: <https://www.cbp.gov/travel/pleasure-boats/pleasure-boat-overview/roam> For further questions about crossing the U.S./Canadian border, please call a local port of entry: (218) 283-2541 (International Falls) or (218) 475-2244 (Grand Portage).

## Recreation Alternatives on Crown Land

For information about camping and recreation on Ontario's Crown land outside of provincial parks and conservation reserves, please visit: <https://www.ontario.ca/page/recreational-activities-on-crown-land>

## BWCAW Permits for Travel To/ From Canada

When your trip includes travel to or from Canada, select Paddle to/from Canada or Motor to/from Canada for the permit type when reserving your BWCAW permit online at [Recreation.gov](http://Recreation.gov).

# Quetico Provincial Park:

807-597-2735 Park Headquarters • 888-668-7275 Reservation Line • [www.ontarioparks.com](http://www.ontarioparks.com)  
[www.ontarioparks.com/park/quetico/alerts](http://www.ontarioparks.com/park/quetico/alerts)

# Camping and Fire

**D**id you know that 50% of wildfires in the BWCAW are caused by escaped campfires? To help reduce wildfire risk in the BWCAW, choose a camp stove instead of a campfire. If a campfire is allowed, build it in the fire grate and keep it small. Like a candle in your home, never leave a fire unattended at any time. Keep all flammable materials away from your campfire.

Always make sure your campfire is dead out before leaving your campsite, even for a short time. Drown your fire with water, extinguishing all embers, leaving it cold to the touch.

## Watch For Hazards

Keep a heads up! Weakened trees (even when green) can still pose a hazard during high winds. Avoid camping around or under damaged or leaning trees. Root wads above ground may also be unstable and dangerous.

## Know About Campfire Restrictions

Restrictions are implemented during high fire danger to decrease the threat of unwanted wildfires. Fire restrictions are put in place for your safety and the safety of firefighters. Always check for potential restrictions just prior to your trip. Camp stoves may be required if restrictions are implemented. For current fire restriction information contact any Superior National Forest Office (see page 24), or check our website for Fire Alerts: [www.fs.usda.gov/superior](http://www.fs.usda.gov/superior)

## Your Permit Reservation

If an entry point is closed and alternates are not available, reservation and user fees will be refunded. If the entry point is not closed and you choose not to use your reservation because there is a fire, you will not be refunded the reservation fee and user fees may be retained if inside the cancellation window.

## If You See Or Smell Smoke, Don't Panic

Do pay attention! Steps may be taken to reduce your risk.



Courtesy of Tom Kaffine

**If you encounter a wildfire as you travel in the BWCAW, follow these steps:**

### 1. Watch The Weather

**Wind** — Most fires travel with the prevailing wind in our area. Have a safe route to follow if wind direction changes. Keep in mind that strong winds can carry fire embers causing spot fires ahead of the original fire.

**Evening Humidity** — Consider that humidity typically increases in the early morning and late evening. Fire activity may decrease with higher humidity.

**Tall Smoke Plumes** — If you see or experience a large smoke plume close to you, take precaution; seek a point of refuge such as a lake, and be prepared for resulting high wind and waves.

### 2. Make A New Plan

Look at alternate travel routes staying close to larger bodies of water. If it is safe, consider traveling out of the fire area. If you must travel through burned areas, watch for burned snags and hot stump holes which could be hazardous.

### 3. Find A Safe Place

If you feel threatened find a large lake. Keep away from the fire's path. If the fire is upon you, don't panic. Put on your life jacket and take your canoe into the water. Paddle to the middle of the lake,

tip your canoe and go under it. You can breathe the cool trapped air under your canoe until the fire passes.

## Fire Management

**A** guiding management objective for the wilderness is to allow natural processes, including wildfire, to play their ecological role to the greatest extent possible while minimizing potential risks to human life and private property. Historically, big forest fires used to be commonplace in this area. In fact, they're part of a natural process that revitalizes the ecosystem in this fire-dependent landscape.

Please check our website at:  
[www.fs.usda.gov/superior](http://www.fs.usda.gov/superior)  
for Fire Alerts.





# Winter Wilderness Travel

The BWCAW in the winter is a truly unique experience, whether traveling by dogsled, skijoring, skiing or snowshoeing. During this time of year, visitors have a very different kind of experience than those that visit during the summer season. You are less likely to run into other visitors and can experience a sense of solitude and self-reliance in a way that few other places allow. Winter wilderness travel requires a high degree of preparation, planning, skill and wisdom.

Winter temperatures in the BWCAW average 15-20 degrees Fahrenheit, with overnight lows from zero to 7 below zero. During severe cold spells, daily highs can remain below zero, with low temperatures falling into the 20 to 30 below zero range. Wind chill exacerbates the cold and blowing snow can make travel difficult. Average snowfall is 50-65 inches, with 70-90 inches along Lake Superior. Snow depths in late February to early March may be 15-25 inches with some higher terrain receiving over three feet.

Winter conditions make self-reliance, good judgment and knowledge of your limits critical. Whether you are dog sledding, skiing or snowshoeing, it is important to plan well and prevent hypothermia and frostbite:

- Be prepared for extreme cold, windy or wet conditions. Dress in layers to remain comfortable by adding or removing clothing depending on conditions and your energy level. Change into dry clothing as needed.
- Drink plenty of water and eat often. Avoid alcoholic beverages. Alcohol causes the body to lose heat more rapidly, even though one may feel warmer after drinking.
- Avoid open water and thin ice. Never walk on ice less than four inches thick.
- Hypothermia is a dangerous lowering of the body temperature. Warning signs include uncontrollable shivering, disorientation, slurred speech and drowsiness. Frostbite causes a loss of feeling and a white or pale appearance in extremities such as fingers, toes, tip of the nose and ear lobes. If symptoms of either condition are detected, get medical care immediately!

## Travel Permits

Permits are required year-round for all visitors to the Boundary Waters Canoe Area Wilderness. For day or overnight travel from October 1–April 30, it's easy! Self Issued permits are available from kiosks at BWCAW entry points and Forest Service offices (no reservation required and no recreation fees).

**BWCAW Regulations and Rules (see pages 6-7) apply year-round. Even though the BWCAW wears a beautiful white protective coat in the winter we still need to take care to Leave No Trace.**



*“There is something infinitely healing in the repeated refrains of nature—the assurance that dawn comes after night, and spring after winter.”*

— Rachel Carson

## Choose a Campsite

- When lakes are open, camp at designated sites using firegrates and latrines.
- When lakes are frozen, camp on ice, in a sheltered bay or in a natural forest opening. Locate camp at least 200 feet from trails or summer campsites and out of sight of other groups.
- Make just one trail connecting the shoreline to camp.
- Bury human waste in snow 200 feet from water, campsites, summer trails and portages (pack out toilet paper and all personal waste items).

## Campfires

It is preferable to make a campfire on the ice to minimize fire scars on rocks and shorelines. Use base logs or a portable fire pan for your campfire on the ice. Use a campstove or fire pan for a campfire on land to avoid leaving fire scars on vegetation or rocks.

- Collect firewood far from shorelines, trails and campsites. Use only dead and downed wood easily broken by hand and smaller than your wrist. Never cut a live tree!
- Damaging any living plant is illegal. Peeling birch bark, carving, nailing or chopping roots kills the trees. Never cut live vegetation!
- Make sure your fire is out cold to the touch when you leave.
- Scatter ashes in the woods away from the shoreline and cover the campfire scar with snow.

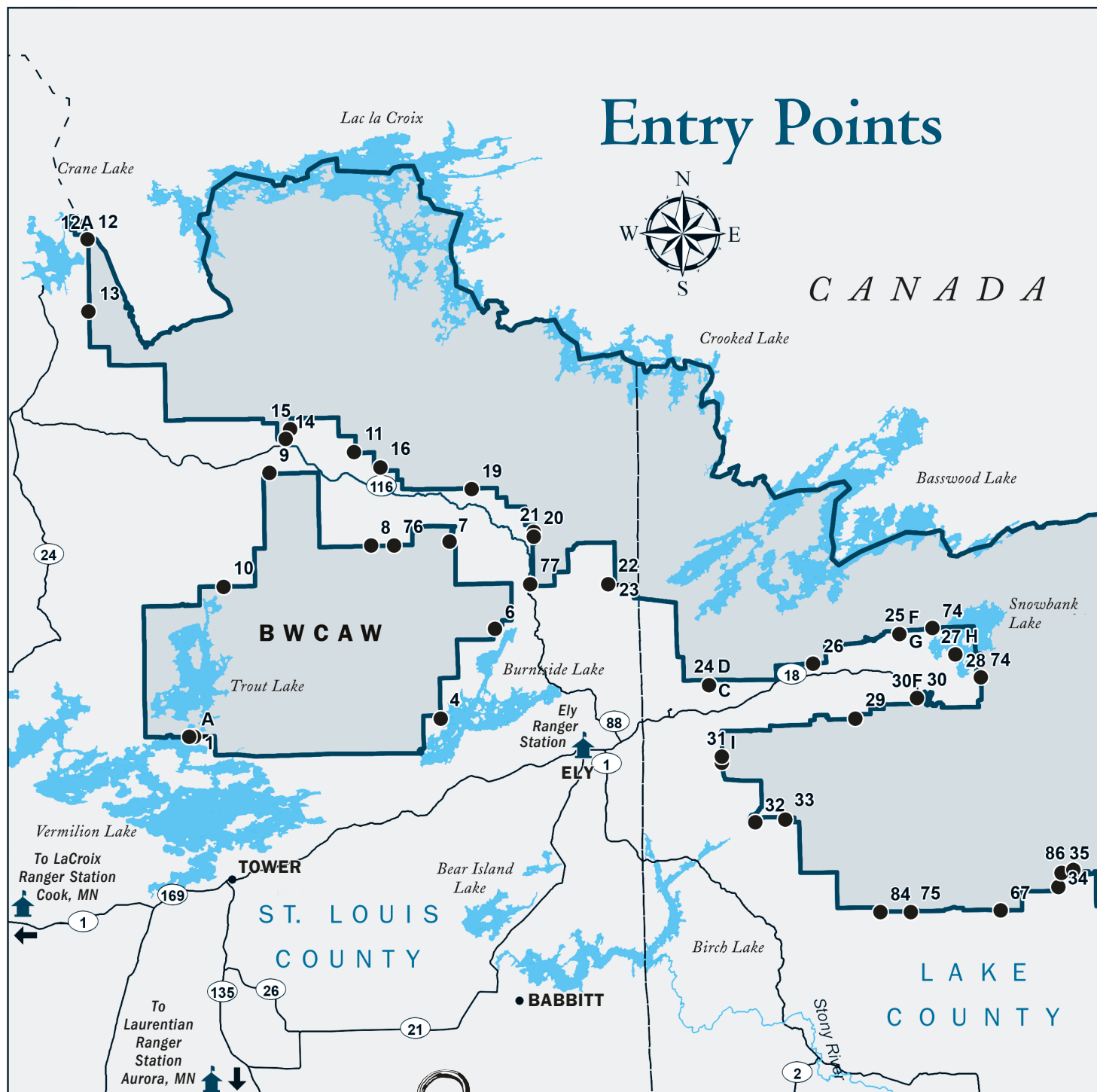
## Live Vegetation

Do not cut green vegetation for tent poles, bedding for humans or dogs, or to create new dogsled trails.

## Reduce Dog Impacts

- Keep dogs under control at all times.
- To avoid damaging or “girdling” trees with rope when staking out dogs, use webbing straps around trees and attach dog picket line to webbing.
- Tether teams out on the ice with ice screws to avoid damaging shoreline vegetation.
- Never bring hay or straw for bedding because they introduce non-native plants.
- Scatter dog waste in the woods at least 200 feet from the water's edge. Keep the entry points clean for others by picking up dog waste before and after hitting the trail.

# Entry Points



The map and charts on these pages are intended to provide a general idea of where Boundary Waters Canoe Area Wilderness entry points and Forest Service permit issuing stations are located on the Superior National Forest, as well as some basic information about each entry point. When planning your trip we highly recommend that you replace this information with maps,



guidebooks and the advice of your outfitter and/or guide, if you decide to use one.

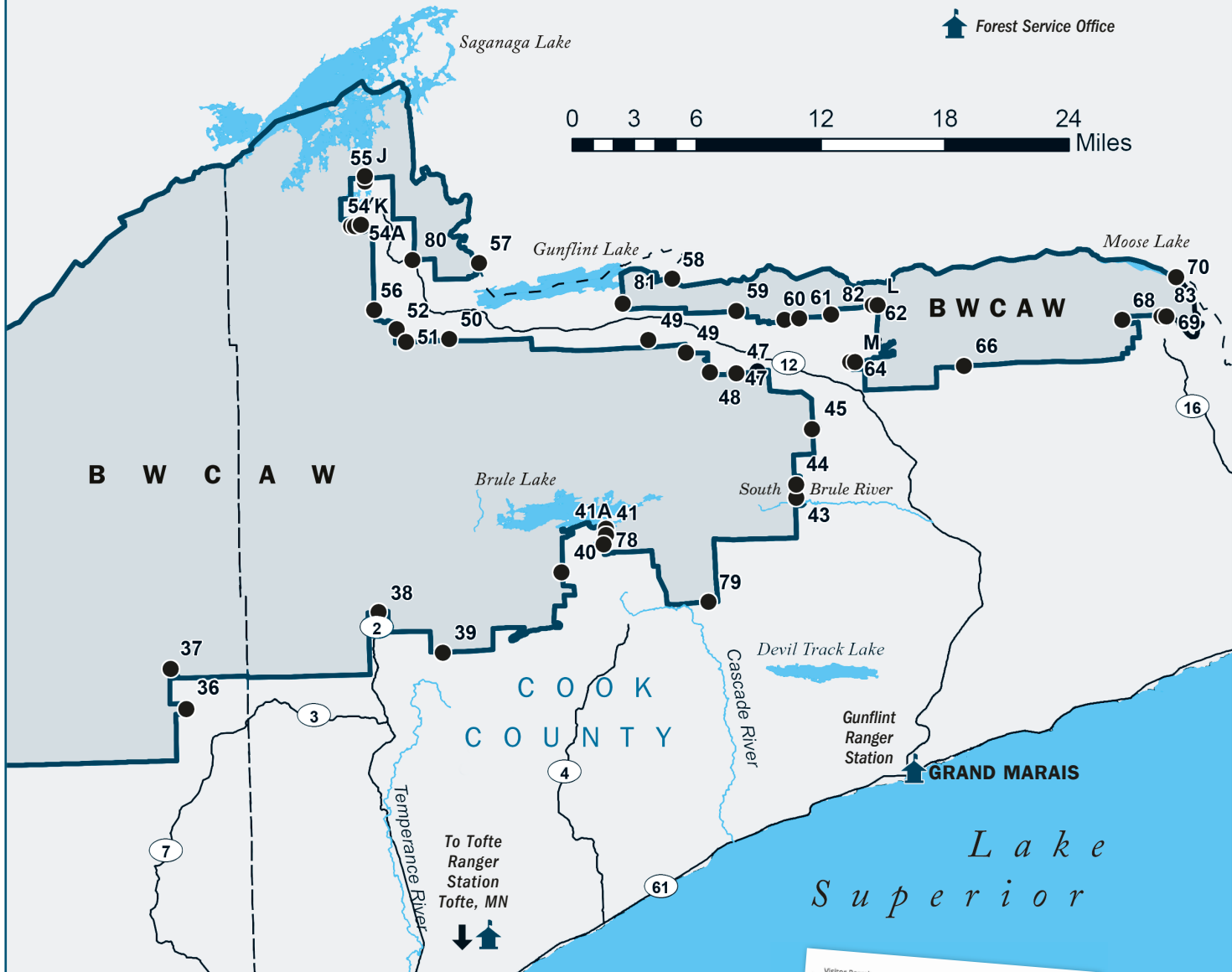
Maps and guidebooks are available from BWCAW permit issuing stations and cooperators (a *cooperator* is a business that has an agreement with the Forest Service to issue BWCAW permits at their location). A list of these permit issuing stations and cooperators is

provided on page 24. These businesses may also assist you in locating guides and outfitters in the area you plan to visit.

A compass and accurate map are essential for backcountry travel. BWCAW maps show the location of designated campsites and portage trails, and are available from the map companies listed on the following page:



This map not for navigation.



McKenzie Maps, Inc.  
800-749-2113  
[www.bwcmaps.com](http://www.bwcmaps.com)

W.A. Fisher Maps  
218-741-9544  
[www.fishermaps.com](http://www.fishermaps.com)

Voyageur Maps, Inc.  
[www.voyagemaps.com](http://www.voyagemaps.com)

Trails Illustrated Maps  
800-962-1643  
[www.trailsillustrated.com](http://www.trailsillustrated.com)

### Travel Permits

- All group members must enter the BWCAW at the entry point and on the entry date shown on the permit.
- Permit becomes invalid when the group leader exits the wilderness.
- The person signing for and picking up the permit can only be responsible for one group.

*Entry Point information continued on pages 14-15*

**METHOD  
OF  
ENTRY**

**OVERNIGHT PADDLE ONLY**

ENTRY POINT NAME	ENTRY POINT NUMBER	RESPONSIBLE RANGER DISTRICT & TOWN	OTHER REMARKS
Angleworm Lake	20	Kawishiwi/Ely	Access is a 640-rod portage to Angleworm Lake.
Baker Lake	39	Tofte/Tofte	Access is a boat landing at Baker Lake with a 10-rod portage into Peterson Lake to reach first campsite.
From Big Lake	7	Kawishiwi/Ely	Access La Pond Lake with a 160-rod portage from outside the BWCAW on Big Lake.
Bog Lake	67	Tofte/Tofte	Access is a 232-rod portage into the lake. Bog Lake has three campsites, and does not provide access to other lakes.
Bower Trout lake	43	Gunflint/Grand Marais	Access is a 72-rod portage from small parking area into Bower Trout.
Brant Lake	52	Gunflint/Grand Marais	Access is a canoe landing at Round Lake with two 85-rod portages to Brant Lake.
Brule Lake	41	Tofte/Tofte	Access is a boat landing at Brule Lake. Large lake with several campsites.
From Canada	71	Kawishiwi/Ely/ LaCroix/Cook Gunflint/Grand Marais	Use only when trip originates in Canada, then travels into the BWCAW. No camping in the Vento Unit – the area east of Gunflint Lake and north of the Gunflint and Arrowhead Trails in the BWCAW – during the month of August. See page 9, “Entry Into the U.S. From Canada” for more information.
Crab Lake & Cummings Lake		Kawishiwi/Ely	Access from Burntside Lake with a 360-rod portage to Crab Lake.
Crocodile River	66	Gunflint/Grand Marais	Can access Crocodile Lake from Crocodile River or East Bearskin. Must spend all nights on Crocodile Lake.
Cross Bay Lake	50	Gunflint/Grand Marais	Access is thru the Cross River with two portages to Ham Lake and a 24-rod portage to Cross Bay Lake.
Daniels Lake	61	Gunflint/Grand Marais	Access is from W. Bearskin Lake with a 60-rod portage to Daniels Lake and 665-rod portage to Rose Lake.
Duncan Lake	60	Gunflint/Grand Marais	Access is from W. Bearskin Lake with a 70-rod portage to Duncan Lake and an 80-rod portage to Rose Lake.
Hog Creek	36	Tofte/Tofte	Access is a 15-rod portage to Hog Creek leading into Perent Lake.
Homer Lake	40	Tofte/Tofte	Access is a boat landing at Homer Lake. Part of Homer Lake is outside of the BWCAW (motors allowed)
Island River	34	Tofte/Tofte	Two small portages leading to Isabella River.
Isabella Lake	35	Tofte/Tofte	Access is a 70-rod portage to Isabella Lake.
John Lake	69	Gunflint/Grand Marais	Access from Little John Lake with a 10-rod portage to John Lake.
Kawishiwi Lake	37	Tofte/Tofte	Access is a boat landing at Kawishiwi Lake.
Lake One	30	Kawishiwi/Ely	Access is a canoe landing at Lake One.
Larch Creek	80	Gunflint/Grand Marais	Access from the canoe landing at Larch Creek.
Little Gabbro Lake	33	Kawishiwi/Ely	Access is a 200-rod portage from the parking lot to Little Gabbro Lake.
Little Indian Sioux River South	9	LaCroix/Cook	Heading South from the Echo Trail. Difficult route. Four portages to Bootleg Lake.
Little Indian Sioux River North	14	LaCroix/Cook	Access is a 40-rod portage heading North from the Echo Trail.
Little Isabella River	75	Tofte/Tofte	Access is a 20-rod portage to Little Isabella River. Several short portages lead to the Isabella River.
Lizz & Swamp Lakes	47	Gunflint/Grand Marais	Access from Poplar Lake by 51-rod portage to Lizz Lake and 100-rod portage into Swamp Lake.
Magnetic Lake	57	Gunflint/Grand Marais	Access Magnetic Lake and Granite River from Gunflint Lake.
Meeds Lake	48	Gunflint/Grand Marais	Access from Poplar Lake into Meeds Lake with a 220-rod portage.
Missing Link Lake	51	Gunflint/Grand Marais	Access is a canoe landing at Round Lake with a 142-rod portage to Missing Link Lake.
Moose River South	8	LaCroix/Cook	Access is a canoe landing heading South from the Echo Trail. Three portages to enter Big Moose Lake.
Moose/Portage River North	16	LaCroix/Cook	(North of Echo Trail) Access is a 160-rod portage heading North from the Echo Trail.
Morgan Lake	45	Gunflint/Grand Marais	Access is a 320-rod portage to Morgan Lake. No campsites on Morgan Lake—short portages to further lakes for campsites.
Mudro Lake	23	Kawishiwi/Ely	Access into Mudro Lake involves portages ranging from 20–185 rods.
Mudro Lake—Restricted	22	Kawishiwi/Ely	Three accesses into Mudro Lake involve portages ranging from 20–185 rods. Restriction is no camping on Horse Lake.
North Fowl Lake	70	Gunflint/Grand Marais	Access from Little John Lake with an 88-rod and a 160-rod portage to get to North Fowl Lake. Border lake between U.S. & Canada.
North Kawishiwi River	29	Kawishiwi/Ely	Access the North Kawishiwi River through Ojibway Lake and Triangle Lake using two portages.
Pine Lake	68	Gunflint/Grand Marais	Access through McFarland Lake by a 2-rod portage.
Ram Lake	44	Gunflint/Grand Marais	Access is a 97-rod portage from the parking area.
Sawbill Lake	38	Tofte/Tofte	Access is a boat landing at Sawbill Lake.
Skipper & Portage Lakes	49	Gunflint/Grand Marais	Access is a 320-rod portage from Poplar Lake or a 230-rod portage from Iron Lake.
Slim Lake	6	Kawishiwi/Ely	Access is a 90-rod portage to Slim Lake Portages to three additional lakes.
Snake River	84	Tofte/Tofte	Access is a 198-rod portage to Snake River & several short portages before reaching Bald Eagle Lake.
Snowbank Lake Only	28	Kawishiwi/Ely	Must camp all nights on Snowbank Lake. Paddle day trips to other lakes are permitted. Access is a boat landing or canoe launch at Snowbank Lake.
South Hegman Lake	77	Kawishiwi/Ely	Access is a 80-rod portage to South Hegman Lake.
South Kawishiwi River	32	Kawishiwi/Ely	Access is a 140-rod portage to the river.
South Lake	58	Gunflint/Grand Marais	Access is from Gunflint Lake with a 10-mile paddle and two short portages to South Lake.
Stuart River	19	Kawishiwi/Ely	Access is a 480-rod portage to the Stuart River.
Wood Lake	26	Kawishiwi/Ely	Access to Wood Lake is a 180-rod portage.

**Traveling to or from Canada by paddle? Select “Paddle to/from Canada” for the permit type when reserving your permit.**

**To check availability for entry points, please visit [www.recreation.gov](http://www.recreation.gov)**



METHOD OF ENTRY	OVERNIGHT PADDLE or MOTOR				
	ENTRY POINT NAME	ENTRY POINT NUMBER	MOTOR HORSEPOWER LIMIT	RESPONSIBLE RANGER DISTRICT & TOWN	OTHER REMARKS
OVERNIGHT PADDLE or MOTOR	Clearwater Lake	62	10 HP	Gunflint/Grand Marais	Motors allowed on Clearwater Lake only.
	East Bearskin Lake	64	25 HP	Gunflint/Grand Marais	Motors allowed on East Bearskin Lake only. No motors on Alder & Canoe.
	Fall Lake	24	25 HP	Kawishiwi/Ely	Access is a boat landing at Fall Lake. Several trip options to Newton, Basswood, & Mud Lakes with additional portages.
	Farm Lake	31	25 HP	Kawishiwi/Ely	Access is a boat landing on Farm Lake with access to South Farm Lake. Paddlers access North Kawishiwi River from Farm Lake. Some trip options available for paddlers with additional portages.
	Lac La Croix Only	12A	Unlimited (except where paddle only)	LaCroix/Cook	Enter from Crane Lake. You must camp all nights on Lac La Croix. Day trips to other lakes permitted. Use this entry point only after Entry Point 12 Little Vermilion Lake is full. Very difficult to reach Lac La Croix by paddle in one day.
	Little Vermilion Lake	12	Unlimited	LaCroix/Cook	Enter from Crane Lake. Note: not the entry point to use for Trout Lake (#1). On U.S. side motors allowed only up to edge of Snow Bay on Lac La Croix.
	Moose Lake	25	25 HP	Kawishiwi/Ely	Access is an boat landing or canoe launch at Moose Lake. Many trip options for paddlers with additional portages.
	Saganaga Lake	55	25 HP (except where paddle only)	Gunflint/Grand Marais	No motors (use or possession) west of American Point. Access to Canada (the Crown land and Quetico Park). Large lake with many campsites and easy access.
	Seagull Lake	54	10 HP (except where paddle only)	Gunflint/Grand Marais	No motors (use or possession) west of Three Mile Island. Large lake with several campsites. Landing at Seagull Lake.
	Snowbank Lake	27	25 HP	Kawishiwi/Ely	Access is a boat landing or canoe launch at Snowbank Lake. Many trip options for paddlers.
	Trout Lake	1	25 HP	LaCroix/Cook	Access from Vermilion Lake via a 60-rod canoe portage or 180-rod portage that allows the use of portage wheels.
	<b>Overnight Paddle and Overnight Motor permits share the preceding entry points, so motors may be encountered along portions of the route.</b>				
DAY USE MOTOR	Clearwater Lake	L	10 HP	Gunflint/Grand Marais	Motors allowed on Clearwater Lake only.
	East Bearskin Lake	M	25 HP	Gunflint/Grand Marais	Motors allowed on East Bearskin Lake only. No motors on Alder or Canoe Lakes.
	Fall Lake Only	C	25 HP	Kawishiwi/Ely	Valid only on Fall Lake not Newton or Basswood. Access is a boat landing at Fall Lake.
	Fall Lake, Newton, Pipestone & Beyond	D	25 HP	Kawishiwi/Ely	Access is a boat landing at Fall Lake. Valid on Fall, Newton & Basswood.
	Moose Lake to Newfound & Sucker Lakes	F	25 HP	Kawishiwi/Ely beyond Sucker Lake	Valid only on Moose, Newfound and Sucker Lakes. Travel not permitted
	Moose Lake to Prairie Portage to Basswood	G	25 HP (except paddle only areas)	Kawishiwi/Ely	Commercial portage service available. Valid on Moose, Newfound, Sucker and Basswood Lakes.
	Saganaga Lake	J	25 HP	Gunflint/Grand Marais	No motors (use or possession) west of American Point. Access to Canada.
	Seagull Lake	K	10 HP	Gunflint/Grand Marais	No motors (use or possession) allowed west of Three Mile Island.
	Snowbank Lake	H	25 HP	Kawishiwi/Ely	Motors allowed on Snowbank Lake only.
	South Farm Lake	I	25 HP	Kawishiwi/Ely	Motors allowed on South Farm Lake only.
	Trout Lake	A	25 HP	LaCroix/Cook	Access from Lake Vermilion via a 180-rod portage suitable for portage wheels. Commercial portage service available.
	<b>Traveling to or from Canada by motor? Select "Motor to/from Canada" for the permit type when reserving your permit.</b>				
OVERNIGHT HIKING	Angleworm Trail	21		Kawishiwi/Ely	Trail loops around Angleworm Lake. 12 miles. If paddling, use entry point #20.
	Big Moose Lake Trail	76		LaCroix/Cook	No loop options. 2 miles to Big Moose Lake. If paddling use Entry Point #8.
	Blandin Trail	11		LaCroix/Cook	Winter route to Lamb Lake. 2.4 miles.
	Border Route Trail—East	83		Gunflint/Grand Marais	53 miles. Shorter options available.
	Border Route Trail—Center	82		Gunflint/Grand Marais	53 miles. Shorter options available.
	Border Route Trail—West	81		Gunflint/Grand Marais	53 miles. Shorter options available.
	Brule Lake Trail	78		Gunflint/Grand Marais	Trailhead is on Forest Road 326, 1/3 mile south of the Brule Lake parking lot on the east side of the road. Parking at Brule Lake lot. Total trail distance is 7 miles.
	Eagle Mountain Trail	79		Gunflint/Grand Marais	The trail is 3.5 miles to the top (one way). Provides access to Brule Lake Trail.
	Herriman Lake Trail	13		LaCroix/Cook	15 miles of trail accesses 4 lakes. Loop options.
	Norway Trail	10		LaCroix/Cook	8 mile trail or 2 mile option. No loops.
	Kekekabic Trail—East	56		Gunflint/Grand Marais	46 mile trail that continues to the west side trail head. Rolling terrain through several lakes. Minimal use.
	Kekekabic Trail W./Snowbank	74		Kawishiwi/Ely	Loop option includes 27 miles of the Snowbank trail, plus the 46 mile Kekekabic Trail that continues to the east side trail head.
	Partridge Lake/S. Lake Trail	59		Gunflint/Grand Marais	4 miles. If paddling use Entry Point #60.
	Pow Wow Trail	86		Tofte/Tofte	30 mile loop trail.
	Sioux-Hustler Trail	15		LaCroix/Cook	30 mile round trip with loop. Primitive trail not well maintained.

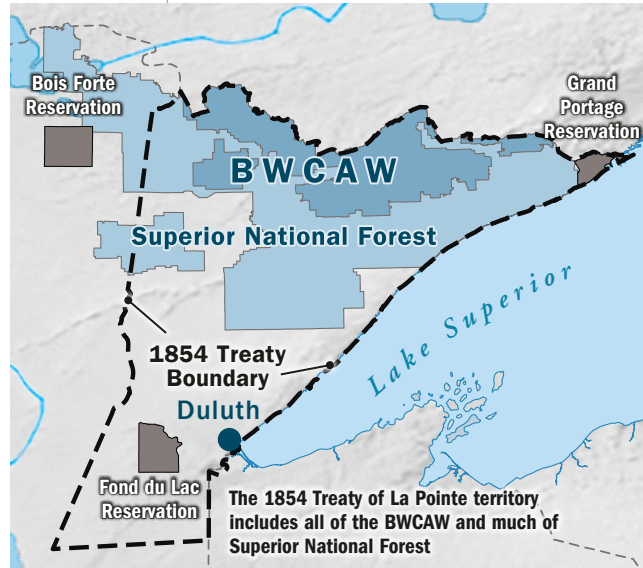
# BWCAW Past, Present and Future

## Treaty Obligations

Indigenous peoples have utilized the Boundary Waters Canoe Area Wilderness (BWCAW) for a millennia. These are the traditional territories of the Ojibwe, or Anishinaabeg. Original transportation routes used by Indigenous peoples were traversed by voyageurs during the fur trade. The rugged terrain in this water-rich landscape continuously impeded widespread non-Indigenous settlement and development throughout time. Nearly all the portages and canoe routes that exist today are the original passageways!

During settlement, Native inhabitants retained subsistence rights throughout what is now Northeastern Minnesota, in the 1854 Treaty of La Pointe: “And such of them as reside in the territory hereby ceded, shall have

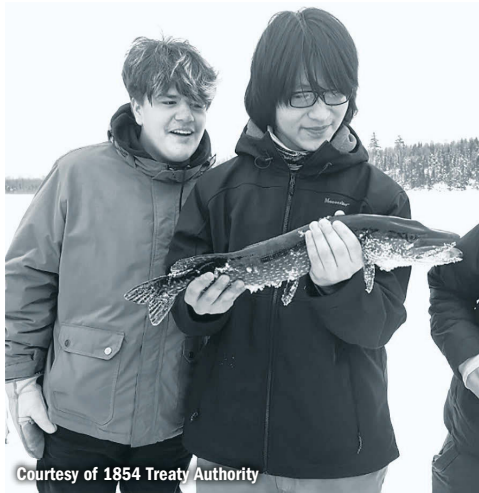
the right to hunt and fish therein, until otherwise ordered by the President” (Article 11, Treaty with the Chippewa, 1854). Presently, the inter-Tribal natural resource management agency, 1854 Treaty Authority, implements and protects off-reservation hunting, fishing, and gathering for the Bois Forte Band of



Courtesy of 1854 Treaty Authority

in 1978. This proclamation had the purpose of preserving the integrity of the area as one ‘absent of residential people.’ However, Ojibwe families remained in the BWCAW well into the twentieth century prior to being removed to reservations (and reserves in Canada). For example, an Anishinaabeg community thrived on Basswood Lake until the Indian Agent compelled them to be removed. Authorities were anxious to stop traditional lifeways, particularly families’ seasonal moves to areas with abundant natural resources such as a variety of fish species, but especially where whitefish, blueberries and caribou could be harvested.

Visitors using the woods and water for recreation and treaty harvesters alike share an interest in protecting and maintaining the quality of these resources. Local relationships have shaped canoe country since time immemorial. The Anishinaabeg view those who share the landscape with us as ‘relatives,’ not only the two-legged, but the four-legged and even plants. Visitors, please note the importance in acknowledging this Indigenous homeland and the reserved rights not yet realized by a future generation of children.

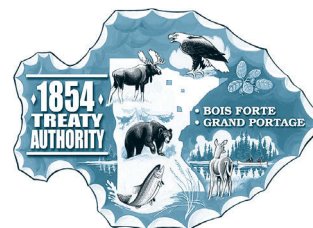
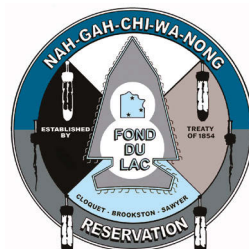


Courtesy of 1854 Treaty Authority

*akwa'waa*, “s/he fishes through the ice with spear”

Chippewa and the Grand Portage Band of Lake Superior Chippewa. Similarly, the Great Lakes Indian Fish & Wildlife Commission (GLIFWC) works directly with the Fond du Lac Band of Lake Superior Chippewa to affirm and apply their treaty rights within the 1854 ceded territory. All three Bands continue to exercise these rights within the five and a half million acres of 1854 ceded territory, which encompasses most of the Superior National Forest, including the BWCAW. Treaty rights are still upheld, and Band members continue to exercise those rights and carry-on traditional ways.

The BWCAW was federally designated



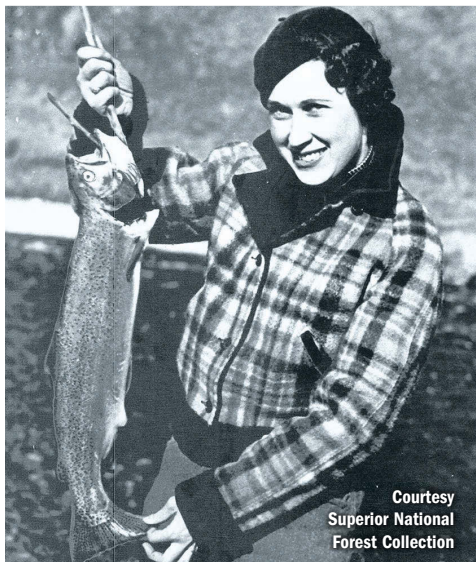


# Recent Events that have shaped the BWCAW

## What is Wilderness?

On September 3, 1964 The Wilderness Act was signed into law. The Boundary Waters Canoe Area Wilderness was also designated with the passing of this Act. The Wilderness Act provided a legal definition of wilderness, created the National Wilderness Preservation System, established a process to be used for designating wilderness areas, and set provisions for the use of wilderness areas. The intent of the Wilderness Act was to establish wilderness areas “for the use and enjoyment of the American people in such manner as will leave them unimpaired for future use and enjoyment as wilderness.” Legal wilderness, “in contrast with those areas where man and his own works dominate the landscape,” is “recognized as an area where the earth and its community of life are untrammelled by man, where man himself is a visitor who does not remain.”

Four federal agencies manage designated Wilderness in the United States: National Park Service, the U.S. Forest Service, Bureau of Land Management, and U.S. Fish and Wildlife Service.



*“A civilization which destroys what little remains of the wild, the spare, the original, is cutting itself off from its origins and betraying the principle of civilization itself.”*

— Edward Abbey



Photo taken by Arthur Carhart, 1921.

## Why Wilderness?

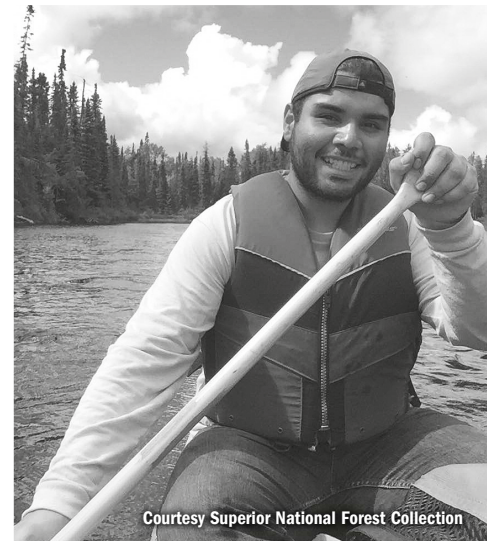
When we talk about wilderness it is important to differentiate when we are talking about wilderness based on our personal definition, wilderness as defined

by non-federal land managers, and federally designated wilderness. There are now 765 federally designated wilderness areas nationwide with a total of 109,129,657 acres. These areas provide multiple benefits including:

- Protects watersheds and plays an important role in oxygen production, CO<sub>2</sub> absorption, soil building, biomass decomposition, insect regulation, and filtering air pollution.
- Is a natural lab in which we can study natural processes. Society can benefit from this scientific research as it enlarges our understanding of the world and our roles in it.
- Holds educational and training value for schools and universities. It is an important classroom for learning primitive outdoor skills such as orienteering, survival, mountaineering, stock packing and paddling.
- Has aesthetic value appreciated through intimate contact with the environment where people can experience sights, sounds and feelings they are unable to experience in developed and less natural settings.
- Holds, for some, philosophical and

religious value. To them wilderness is a place with natural cathedrals where people can celebrate the creative forces behind life.

- Has an intrinsic value hypothesizing that plants, animals, inanimate objects and the ecosystems that they inhabit, have rights of their own to exist.
- Provides a window into the past to study, understand and learn from historic and prehistoric uses and cultures of the area.



# Protecting Your Natural Resources

## Fisheries

The Superior National Forest has 695 square miles of surface water and more than 2,250 linear miles of streams that offer a wide range of fishing opportunities in all seasons.

Coldwater game species include lake trout, walleye, brook trout, pike and smallmouth bass. Some lakes and streams within the Superior National Forest have special regulations, so always check the Minnesota DNR fishing regulations when you plan your trip.

The Forest works in collaboration with several agencies to accomplish management objectives and discusses employing the minimum tool necessary to administer the area as wilderness. This effort maintains healthy aquatic resources on the Superior National Forest.

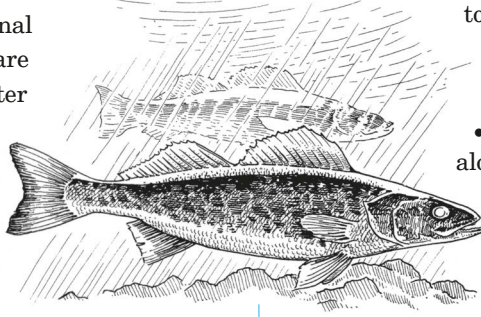
## Stocking

Limited stocking occurs in BWCAW lakes and they are stocked primarily with brook trout, lake trout and walleye. Lake trout and brook trout populations can be very susceptible to overfishing. They may require regular stocking to maintain a fishable population.

## What You Can Do

Care for the fish, their aquatic habitat and their terrestrial neighbors. Regulations are meant to ensure sustainable fish populations and healthy lakes and rivers.

- Practice catch and release, even when you are within the allowable catch.
- Handle fish gently, quickly and in the water.
- To prevent the spread of aquatic invasive species, obey AIS laws (see page 20) and use artificial bait.
- Keep fish horizontal for pictures.
- If you plan to keep a fish, kill it right away and be prepared to keep the gutted fish on ice.



- Choose lead-free tackle to prevent adverse effects on aquatic ecosystems and ultimately humans.
- Leaving fish remains along shore can alter natural behaviors, expose animals to predators, cause stress, and even cause unnatural fluctuations in

numbers, as with increased gulls in some areas. Scatter remains back in the woods at least 200 feet away from the shore or camping areas.

## Large Groups

If you are planning a trip for a non-profit organization, there is a limit of no more than 3 permits in a season to be reserved using the non-profit organization name as the group leader. Please contact any Superior National Forest office for more information, or visit [www.recreation.gov](http://www.recreation.gov) under general rules for the BWCAW.

Keep these tips in mind when planning for large groups to reduce environmental and social impacts:

- If your group is more than nine people, regardless of the age, you may not enter the BWCAW. Consider other options, such as camping at a primitive or developed campground and boating on lakes outside the designated wilderness area (see page 2).
- If your group of more than the maximum size wishes to break into smaller groups to enter the BWCAW, each smaller group must have its own permit.
- Each group must travel and camp separately. This means each should have its own food, first aid kit and essential gear. To make it easier for the groups to travel separately, reserve different entry points and plan separate routes.
- Each group should have an adult who will be responsible for the leadership and safety of the group.
- And if you do know other visitors in the area, don't purposely congregate in a group larger than 9 while traveling, visiting a destination area or camping.
- Portages and waterways can become very congested. Wait for another group

to cross the portage before you begin, portage your gear efficiently and find another place for your break. Keep your distance from other groups on the waterways.

- Begin looking for campsites early in the day and share tents since many wilderness sites only have one or two good tent pads.
- Encourage your group members to use campsite areas that have already been hardened rather than trampling vegetation and causing erosion.

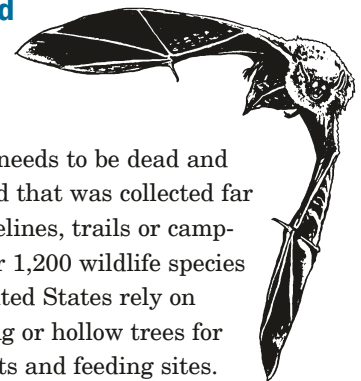
## Noise

Being considerate of other wilderness visitors is one of the 7 Leave No Trace Principles. A courteous group can do wonders to minimize the impact of noise. Sound carries a long distance over water, mostly in the evening when people are listening more than moving. Try to avoid banging pots and pans, dragging canoes over rocks, shooting guns, singing loudly and screaming, especially in the morning and evening. If your group is rambunctious, consider staying in a more isolated area such as a lake with only one campsite. When you keep noise down, your group and others will have a better chance of experiencing wildlife and a sense of solitude.

## Bats and Other Wildlife Habitat

Firewood needs to be dead and down wood that was collected far from shorelines, trails or campsites. Over 1,200 wildlife species in the United States rely on dead, dying or hollow trees for dens, roosts and feeding sites. Even fish benefit from trees that have fallen into streams and lakes. Trees that demonstrate disease or have defects or other features are most often those that provide excellent habitat for a variety of wildlife species.

One species of high importance is the northern long-eared bat (*Myotis*

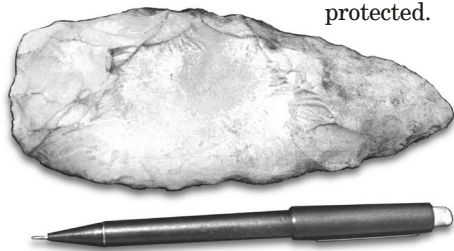




*septentrionalis*). This bat species was recently listed as Federally Threatened by the U.S. Fish and Wildlife Service. This designation is a result of the devastation that this bat has experienced from a fungal disease called White nose Syndrome (WNS). WNS affects hibernating bats by causing them to wake up more frequently. This increase in activity depletes the bats' energy stores needed to survive winter, causing them to eventually die from starvation, dehydration and exposure. Researchers estimate that over 5.5 million bats have died as a result of being infected with wns. To find out more about WNS, please visit [www.whitenosesyndrome.org](http://www.whitenosesyndrome.org)

## Heritage Resources

Leave No Trace wilderness principles apply not only to the natural environment but also to archaeological resources. Over 1,200 archaeological sites have been identified within the Boundary Waters Canoe Area Wilderness. These sites include Native American rock art, stone tools and pottery sherds, glass beads and fur-trade artifacts, and mining and logging camps. These sites provide us with a fascinating window into the history of human use of the Boundary Waters over the past 10,000 years. However archaeological materials are a non-renewable resource and must be protected.



*View of a prehistoric siltstone biface identified within the BWCAW. Bifaces are considered 'preforms' that have been flint knapped on both sides, are easily transported, and can be eventually worked down into spear points*

Once an artifact is removed from its context within a site we lose much of the valuable information it can provide us about who was using the site, when, and for what.

Respect cultural resources as you would natural resources. If you come across an archaeological site do not remove or disturb artifacts. Excavating, defacing or removing an archaeological

resource from federal lands without a permit is a crime punishable by fines or imprisonment. Write down a description of what you found, including the location, and report it to Forest Service personnel. Photos, sketches, maps or GPS information are all useful information to include when describing archaeological finds.

## Non-Native & Invasive Species

Non-native invasive species (NNIS) are plants, animals, insects or other organisms whose introduction to an area cause or are likely to cause economic or environmental harm or harm to human health. Other names for NNIS include exotic species, noxious weeds, pests, etc. Invasive species can occur on land or in the water. Some examples in Minnesota include purple loosestrife, gypsy moth, emerald ash borer, Eurasian water milfoil, earthworms, spiny water flea, rusty crayfish and orange hawkweed. If you see these species on the Forest report their known locations if possible.

Because invasive species do not respect property lines, we are working with other agencies, non-governmental organizations, and citizens like you to increase awareness of this resource management issue and take action to stop the spread of NNIS in our area. For more information about invasive species in Minnesota, go to the MN Department of Natural Resources website at: [www.dnr.state.mn.us/invasives/index.html](http://www.dnr.state.mn.us/invasives/index.html)

## Prevention:

- Clean your gear/boat before entering and leaving the wilderness or recreation site.
- Remove mud and seeds from clothes, pets, boots, gear and vehicles.
- Burn only local or certified firewood.
- Do not pick wildflowers and transport them from one location to another.

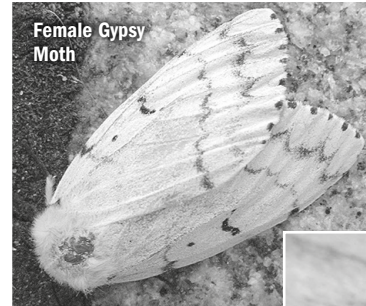
## The Gypsy Moth Threat

The non-native gypsy moth is a threat to the forests of the BWCAW and the rest of northeast Minnesota. Gypsy moth caterpillars consume the foliage of several types of trees and can destroy millions of acres of forest each year.

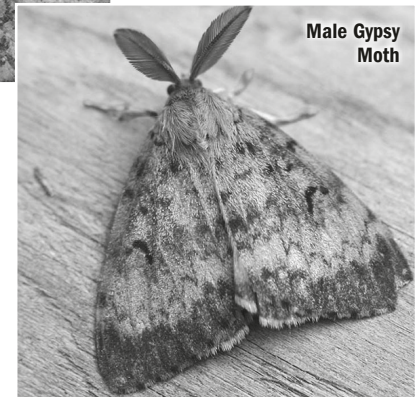
During late summer, the female moth lays fuzzy, tan-colored egg masses about the size of a quarter. Each mass contains

500-1,000 eggs which hatch the following the spring when the weather is right.

Egg masses can be found on living and inanimate objects,



Female Gypsy Moth



Male Gypsy Moth

including trees, logs, firewood, campers, canoes, vehicles and lawn chairs. People may unintentionally help spread the gypsy moth by moving these objects with egg masses attached. This is how the moth got its name.

The Superior National Forest has worked with other agencies for several years to slow the spread of the gypsy moth in our area through various treatments. Quarantines are currently in effect in Cook and Lake counties.

## What you can do:

- Carefully inspect your vehicles, equipment, firewood, etc. for egg masses.
- Do not transport egg masses. Remove and destroy them.
- Follow any restrictions, including quarantines and inspections.
- Visit the Superior National Forest and MN Department of Agriculture web sites at: [www.mda.state.mn.us/plants/pestmanagement/spongymothunit](http://www.mda.state.mn.us/plants/pestmanagement/spongymothunit)

*Continued* |

## Stop Aquatic Invaders



### STOP AQUATIC HITCHHIKERS!

The introduction of Aquatic Invasive Species (AIS), such as spiny water flea and rusty crayfish, to new water bodies negatively impact native organisms in some lakes and rivers. To prevent the spread of AIS, visitors should inspect their equipment, remove mud and aquatic vegetation, and lay their equipment out to dry when possible. In accordance with Minnesota law, bait containers and other water containing devices must be drained before leaving a water body (this excludes devices such as water bottles).



Spiny Waterflea on mechanical pencil tip

Contact the DNR if you find spiny waterflea in a BWCAW lake

### Q. How do I prepare my boat or canoe for the water?

**A.** Inspect your watercraft, motor and trailer for aquatic plants, zebra mussels and other prohibited species from your boat or canoe and remove any that you find. State law prohibits placing your watercraft, trailer or equipment with aquatic plants, zebra mussels or invasive species into the water. For a list of prohibited invasive species and invasive species laws, visit: [www.dnr.state.mn.us/invasives/laws.html](http://www.dnr.state.mn.us/invasives/laws.html)

### Q. What should I do when leaving a lake or river?

**A.** Inspect your watercraft and equipment and remove any aquatic plants or

animals. Remove drain plugs, open water draining valves, and drain portable bait containers before leaving the water access.

### Q. How long do I leave the drain plug open?

**A.** Keep the drain plug out and water draining devices open the entire time that a boat is being transported.

### Q. How do I dispose of unwanted bait?

**A.** State law prohibits dumping unused bait into waters of the state. Dumping bait on the ground is considered littering.

Therefore, unwanted live bait should always be packed out with your trash.

### Q. What do I do with bait containers?

**A.** The law requires all water to be drained from portable bait containers before leaving the water access, including from bait containers that have not been placed in lake or river water.

### Q. How can I comply with draining portable bait containers when portaging from one lake to another?

**A.** If you are portaging a canoe or other watercraft, you will need to drain the water from the bait container on land where it won't drain into any water body and refill the bait container with water

**CLEAN. DRAIN. DRY.**

**BOATS, TRAILERS & GEAR STOP INVASIVE SPECIES**

Download the Free App!

Wildlife Forever | CLEAN DRAIN DRY | U.S. FOREST SERVICE DEPARTMENT OF AGRICULTURE

from the new water body.

### Q. After draining water from bait containers can I keep unused bait?

**A.** Anglers can keep unused bait after draining their bait containers. You can replace the water in portable bait containers with bottled water before transporting the bait home. Some angling related businesses have developed products to help transfer bait from a bait container in the boat to a container in a motor vehicle without the water.

### Q. How do I find out about invasive species laws?

**A.** Contact the Minnesota DNR (888-646-6367) for updates on AIS regulations.

## The following are Prohibited:

- Moving fish from lake to lake by releasing fish off of stringers (many common species, such as walleye and smallmouth bass are themselves not native to large areas of the BWCAW).
- Using live minnows on designated stream trout lakes, including those in the BWCAW.
- Disposing of earthworms in the Forest. A person must not dispose of bait in waters of the state. (84 D.10, subd. 4.). Pack out all unused bait.

Unlike much of the U.S., the Arrowhead Region and the Superior National Forest are fortunate because many of the species that are a problem in the upper Midwest are not well established here yet. However, terrestrial and aquatic NNIS\* can quickly spread once introduced into the environment. NNIS can spread via air, water and on watercraft, equipment, firewood and even the mud on your boots. Some NNIS seem harmless, like earthworms, but can alter an entire forest floor changing the vegetation.

\*non-native invasive species



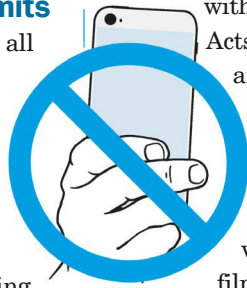
# Special Uses

## Filming & Photography Permits

A special use permit is required for all commercial filming activities and commercial activities which capture still images on film or in a digital format on National Forest Lands. Commercial filming is defined as the use of motion picture, video-taping, sound recording, other moving image or audio recording equipment (including cell phones) that involves the advertisement of a product or service, the creation of a product for sale or the use of actors, models, sets or props.

### Commercial Filming in Designated Wilderness

Proposed commercial activities in designated wilderness areas, such as the BWCAW, are reviewed for compliance



**No commercial filming with your cellphone!**

with existing regulations and Acts (Wilderness Act of 1964 and The BWCAW Act of 1978). Filming outside designated wilderness must always be considered first. The Forest Service will authorize commercial filming or photography activities within designated wilderness areas only when certain conditions are met, and there is still no guarantee of a permit.

### Personal Use

If you are shooting still photographs or 'home movies' for personal use that do not involve advertisement of a product or service, or the creation of a product for sale, then a special use permit is not required.

## Outfitter/Guide Permits

All individuals, organizations and non-profits conducting outfitting or guiding activities on National Forest Lands or adjacent waters must inquire if such activity is classified as "commercial." Commercial guides, church or youth groups, ski instructors, bus tours and canoe groups are all examples of commercial activities that require an Outfitter/Guide Permit.

## Information?

For more information on special use permits and application forms, please visit: [www.fs.usda.gov/main/superior/passes-permits/event-commercial](http://www.fs.usda.gov/main/superior/passes-permits/event-commercial)

## Research and Monitoring

During the summer, you may notice people working on various lakes in the BWCAW. They may be other land management agencies, universities

or research stations. The information gathered is used to develop long term resource management strategies. Use of motorized equipment or transportation

in the non-motorized areas of the BWCAW will be limited to what is absolutely necessary to manage the area as wilderness.

## Air Quality

### Measuring Air Pollution

Monitoring air and precipitation helps us measure air pollution. Along with monitoring the health of the Forest, we can determine when air quality is a problem and identify actions to reduce its harmful effects.

### Poor Visibility Or Regional Haze

Unfortunately, the beauty of our wilderness can be diminished by haze. Haze can reduce the distance you see and even change the apparent colors and textures of the landscape. Recognizing the importance of visual air quality, Congress passed legislation to fix this problem through research and emission reductions from pollution sources. Natural haze caused by fog can decrease visibility, but the addition of air pollution makes visibility worse. Our air monitoring shows that air emissions from human

activities reduce visibility on an average day to about 60%.

### Acidity Of Rain And Snow

The Superior National Forest is home to one of over 200 sites spanning the continental U.S., Alaska, Puerto Rico and Virgin Islands sampling rain and snow weekly to check its chemistry. Precipitation that falls here has higher than natural levels of acidity, but is not thought to be dangerous to the Forest at this time. In addition to being the main cause of poor visibility, sulfates and nitrates are also the two main sources of acid rain. Sulfate pollution is primarily due to coal combustion while nitrate pollution is from all fuel burning activities, especially automobiles. Sulfate pollution is decreasing due to state and federal air pollution control regulations while nitrate pollution is increasing.

### What You Can Do

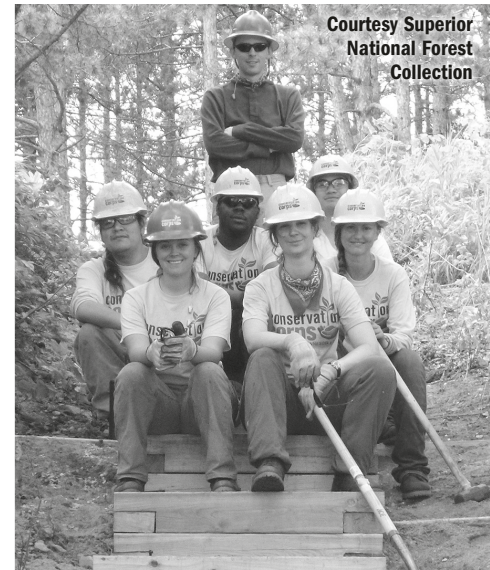
- **Pack Out Your Trash:** State law does not permit open burning of oils, rubber, papers/packaging, plastics, chemically treated materials or other materials that produce noxious smoke. Burning waste — in a campsite or in your back yard — can cause severe health problems and pollute air, soils and water due to carcinogens like dioxin.
- **Conserve Electricity and Fuels:** Most air pollutants come from transportation and the generation of electricity. Saving gas and reducing electrical use, will improve air quality and the health of your National Forest.
- **Learn About Air Pollution:** Even if you live hundreds of miles away, your actions can affect the air quality here on the Superior National Forest. Air masses travel long distances over a number of days, picking up air pollution from industrial and populated areas, and carrying it to the Forest. Learn more at [www.fs.usda.gov/air/wilderness\\_monitoring.htm](http://www.fs.usda.gov/air/wilderness_monitoring.htm)

# Volunteering

## We Need You to Help Carry the Load

An increasing number of people recreate on Forest Service managed lands every year, yet congressionally appropriated funding does not keep pace with resource management needs. To retain the enduring value and 'wilderness character' of the BWCAW, we need volunteers to help carry the load. The Forest Service partners with several organizations to address the backlog of deferred maintenance work and underfunded projects within or near the Superior National Forest in NE Minnesota. These organizations

offer a variety of volunteer opportunities including single day trail stewardship events, multi-day wilderness projects, visitor use monitoring in the BWCAW and service projects tailored to fit the needs of your organization or group. By getting involved with stewardship activities, either through participating in a volunteer project or making a donation, you can help ensure that public lands are preserved for the enjoyment of future generations. For more information, please contact: (218) 626-4314.



## Your User Fees at Work

Meeting the increasing needs of visitors; delivering quality recreation, heritage and wilderness opportunities; and protecting our natural and cultural resources can be challenging. Your overnight permit fees go directly back to the BWCAW to maintain and improve natural resources, recreation facilities and services including:

- When visitors pick up their wilderness permits, a short video is shown to review BWCAW Regulations and Rules. The BWCAW visitor education videos are part of the wilderness experience.
- Visitor contact by Wilderness Rangers in the BWCAW is also an important part of wilderness education and law enforcement.
- Campsite improvements such as transplanting native vegetation to encourage campsite recovery,



improving tent pads, naturalizing illegal sites, cleaning and repairing fire grates, latrine replacement, hazard tree removal, non-native species removal and erosion repair and prevention.

- Winter dog sled program as a means of transporting equipment and/or supplies needed to complete maintenance work on campsites, portages and trails as well as for public user education and law enforcement contacts. This helps prevent the need for using motorized transport.
- Portage and hiking trail improvements such as clearing brush and fallen trees, installing water barriers to prevent erosion, and repairing trail tread and structures.



Spanning the international border between northeastern Minnesota and northwestern Ontario lies an international treasure: the largest expanse of public green space in the heart of North

America. This 5.5 million acre landscape comprises working forest, rugged scenery, clean watersheds, abundant wildlife and outstanding biodiversity. Encompassed by this ecosystem at the "heart of the continent," are several separately managed natural areas including Quetico Provincial Park, Superior National Forest, Voyageurs National Park, Grand Portage National Monument, La Verendrye Provincial Park, additional Ontario provincial parks

as well as Minnesota state forest lands and parks.

The Heart of the Continent Partnership (HOCP) is the Canadian/American coalition working together on cross-border projects that promote the economic, cultural and natural health of the lakes, forests and communities on the Ontario/Minnesota border. To learn more about the partnership's conservation goals, please visit: [www.heartofthecontinent.org/](http://www.heartofthecontinent.org/)





# Sample Trip Itinerary

*Always leave a Trip Itinerary with someone before departing.*

Remember, wilderness travel requires self-reliance and good judgement.  
Never take unnecessary risks that jeopardize the safety of your group!

Permit # \_\_\_\_\_

Trip Leader's Name \_\_\_\_\_

Entry Point \_\_\_\_\_ Exit Point \_\_\_\_\_

Entry Date \_\_\_\_\_ Exit Date \_\_\_\_\_

Number of People \_\_\_\_\_ Number of Watercraft \_\_\_\_\_

Name of Outfitter \_\_\_\_\_ (if applicable)

Vehicle(s) Driven (Color, Make, Model) \_\_\_\_\_

License Number(s) \_\_\_\_\_

Potential Route (lakes/rivers you plan to travel) \_\_\_\_\_

\_\_\_\_\_

\_\_\_\_\_

## Select nearest Forest Service Ranger Station:

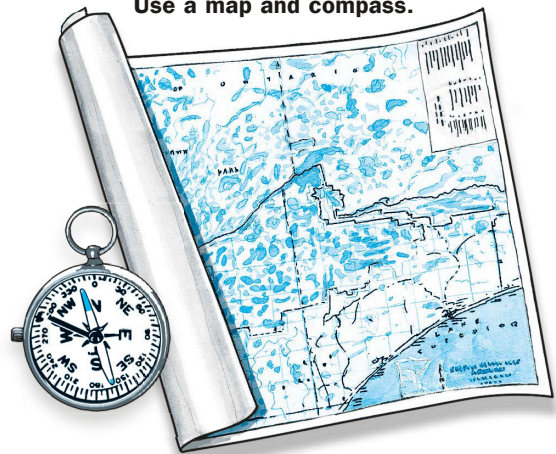
- Kawishiwi Ranger Station, Ely (218) 365-7600
- Gunflint Ranger Station, Grand Marais (218) 387-1750
- Tofte Ranger Station, Tofte (218) 663-8060
- LaCroix Ranger Station, Cook (218) 666-0020
- Laurentian Ranger Station, Aurora (218) 453-8650

## Select the county where you will enter / exit the BWCAW:

(see entry point map on pages 12 and 13)

- St Louis County
- Cook County
- Lake County

Use a map and compass.



## In Case of Emergency

In case of emergency or if search and rescue assistance is needed, call **9-1-1** or the nearest county sheriff's office.

**St. Louis County Sheriff**  
Ely/Cook Area  
(218) 726-2340

**Cook County Sheriff**  
Grand Marais/Tofte Area  
(218) 387-3030

**Lake County Sheriff**  
Isabella Area  
(218) 834-8385

### **YOU ARE RESPONSIBLE FOR ACCURATELY ESTIMATING YOUR RETURN TIME AND DATE.**

The Forest Service does not automatically initiate searches if a group doesn't exit as planned. Be sure to factor in variables that can delay your return such as wind, waves, fatigue, inclement weather, etc. to prevent unnecessary search and rescues. Remember to check in with family or friends as soon as you exit the wilderness.

# BWCAW Permit Issuing Stations/Cooperators\*

## Aurora Area

Forest Service Office – Aurora

## Cook/Orr Area

Forest Service Office – Cook  
Anderson Canoe Outfitters  
Voyageurs Lutheran Ministry  
Zup's Fishing Resort & Canoe Outfitters

## Duluth Area

Forest Supervisor's Office – Duluth  
Frost River  
Duluth Pack Store

## Ely Area

Forest Service Office – Ely  
Boundary Waters Guide Service  
Boundary Waters Outfitters  
Camp Voyageur, Inc.  
Canadian Waters, Inc.  
Canoe Country Outfitters  
Cliff Wold's Outfitting Co.  
Custom Cabin Rental

Ely Outdoors Co.  
Girl Scouts of MN & WI–Lakes & Pines  
LaTourell's Resort & Outfitters  
Moose Track Adventures  
North Country Canoe Outfitters  
Northern Tier High Adventure B.S.A.  
Packsack Canoe Trips & Log Cabins  
Piragis Northwoods Company  
River Point Resort and Outfitting Co.  
Snowbank Lodge and Outfitters  
Spirit of the Wilderness Outfitters  
Timber Trail Lodge  
Voyageur North Outfitters  
Voyageur Outward Bound School  
Williams and Hall Wilderness Guides & Outfitters  
YMCA Camp Widjiwagan

## Grand Marais/Gunflint Area

Forest Service Office – Grand Marais  
Adventurous Christians  
Bearskin Lodge  
Clearwater Canoe Outfitters

Gunflint Lodge & Outfitters  
Gunflint Pines Resort  
Hungry Jack Outfitters  
Nor'Wester Lodge & Canoe Outfitters  
Rockwood Lodge & Outfitters  
Seagull Canoe Outfitters  
Seagull Creek Fishing Camp  
Stone Harbor Wilderness Supply  
Tuscarora Lodge & Canoe Outfitters  
Voyageur Canoe Outfitters  
Way of the Wilderness  
Wilderness Canoe Base  
YMCA Camp Menogyn

## Tofte/Isabella Area

Forest Service Office – Tofte  
Sawbill Canoe Outfitters  
Sawtooth Outfitters

*\*A cooperator is a business that has an agreement with the Forest Service to issue BWCAW permits at their location.*

## For More Information

### Forest Service Offices

**Forest Supervisors Office, Duluth**  
(218) 626-4300  
[www.fs.usda.gov/superior](http://www.fs.usda.gov/superior)

**Kawishiwi Ranger Station, Ely**  
(218) 365-7600

**Gunflint Ranger Station, Grand Marais**  
(218) 387-1750

**Tofte Ranger Station, Tofte**  
(218) 663-8060

**LaCroix Ranger Station, Cook**  
(218) 666-0020

**Laurentian Ranger Station, Aurora**  
(218) 229-8800

**TTY Relay Service:**  
(800) 627-3529

### Tourism Information

**Crane Lake Tourism Bureau**  
(800) 362-7405  
[www.visiteranelake.com](http://www.visiteranelake.com)

**Ely Chamber of Commerce**  
(218) 365-6123  
[www.ely.org](http://www.ely.org)

**Explore Minnesota**  
(888) 847-4866  
[www.exploreminnesota.com](http://www.exploreminnesota.com)

**Iron Range Tourism Bureau**  
(218) 749-8161  
[www.ironrange.org](http://www.ironrange.org)

**Lake Vermilion Resort & Tourism Association**  
(218) 666-5850  
[www.lakevermillionresorts.com](http://www.lakevermillionresorts.com)

**Visit Cook County**  
(888) 922-5000  
[www.visitcookcounty.com](http://www.visitcookcounty.com)

### BWCAW Reservation Center

(877) 444-6777  
[www.recreation.gov](http://www.recreation.gov)

### National Park Service

**Grand Portage National Monument**  
(218) 475-0123  
[www.nps.gov/grpo/index.htm](http://www.nps.gov/grpo/index.htm)

**Voyageurs National Park**  
(218) 283-6600  
[www.nps.gov/voya/index.htm](http://www.nps.gov/voya/index.htm)

### MN Dept. of Natural Resources

**License Bureau**  
(800) 285-2000

**General Information**  
(888) 646-6367  
[www.dnr.state.mn.us](http://www.dnr.state.mn.us)

